


LOC/DME I-DEJ	APP CRS	Rwy Idg TDZE	<b>8500</b>
<b>109.5</b>	<b>011°</b>	Apt Elev	<b>284</b>
Chan 32			<b>285</b>

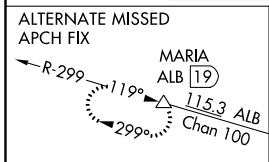
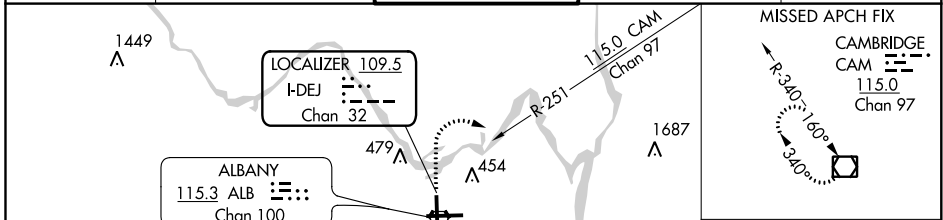
# ILS or LOC RWY 1

ALBANY INTL (ALB)

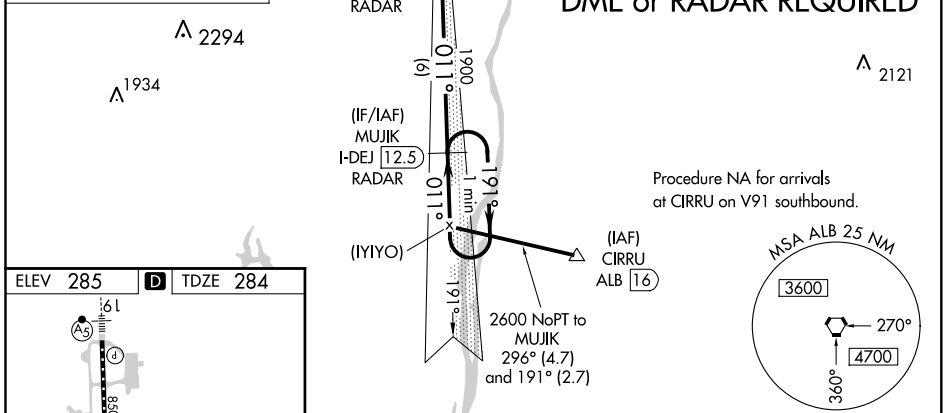
**⚠** Circling NA west of Rwy 1-19. DME or RADAR required.

**MALSR**  MISSED APPROACH: Climb to 800 then climbing right turn to 5000 and on CAM VOR/DME R-251 to CAM VOR/DME and hold.

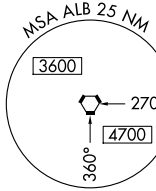
D-ATIS	ALBANY APP CON	ALBANY TOWER	GND CON	CLNC DEL
<b>120.45</b>	<b>132.825 307.2</b>	<b>119.5 257.8</b>	<b>121.7 348.6</b>	<b>127.50</b>



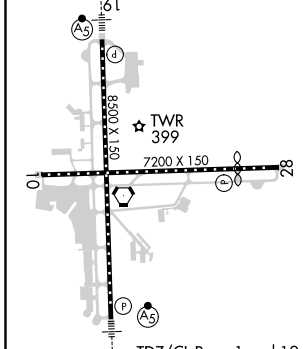
**DME or RADAR REQUIRED**

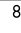
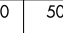



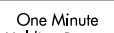
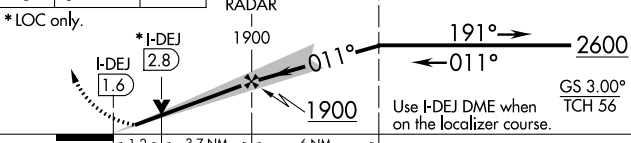


Procedure NA for arrivals at CIRRU on V91 southbound.



ELEV 285	<b>D</b>	TDZE 284
----------	----------	----------



800	5000	CAM	FLEIG I-DEJ 6.5 RADAR	MUJIK I-DEJ 12.5 RADAR	One Minute Holding Pattern
					
* LOC only.					
	Use I-DEJ DME when on the localizer course.				

TDZ/CL Rws 1 and 19	HIRL Rwy 1-19				
	MIRL Rws 10-28				
	REIL Rws 10 and 28				
FAF to MAP 4.9 NM					
Knots	60	90	120	150	180
Min:Sec	4:54	3:16	2:27	1:58	1:38
<b>C</b> CIRCLING	820-1	535 (600-1)	820-1½	960-2¼	675 (700-2¼)

NE-2, 25 FEB 2021 to 25 MAR 2021

NE-2, 25 FEB 2021 to 25 MAR 2021