

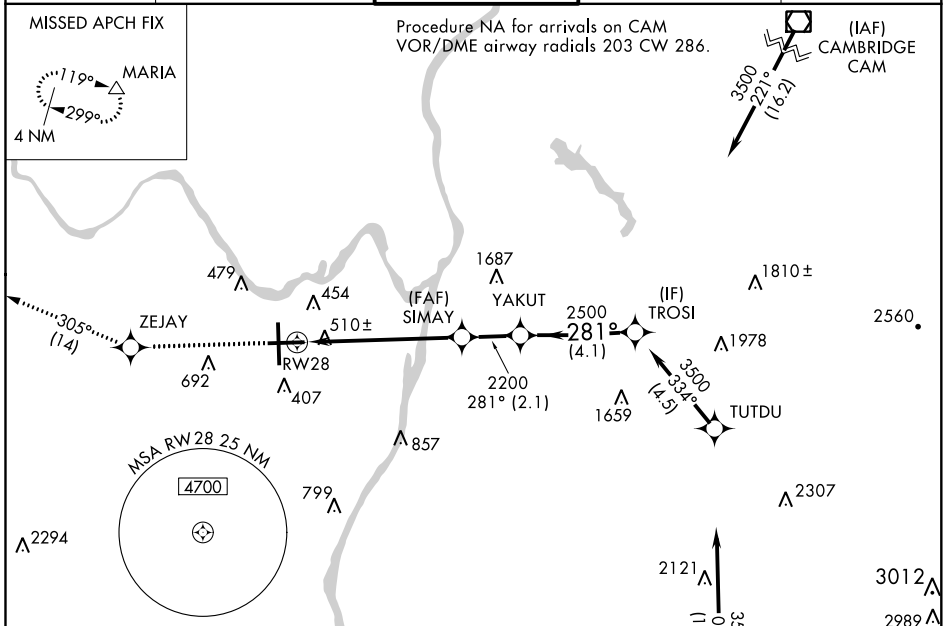
WAAS CH <b>78124</b> <b>W28A</b>	APP CRS <b>281°</b>	Rwy Idg TDZE Apt Elev	<b>6007</b> <b>285</b> <b>285</b>
--	------------------------	-----------------------------	---

# RNAV (GPS) RWY 28

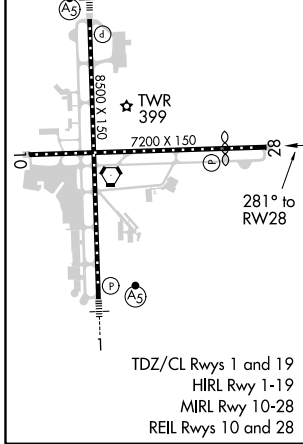
ALBANY INTL (ALB)

RNP APCH.	<p>▼ For uncompensated Baro-VNAV systems, LNAV/VNAV NA below -18°C (0°F) or above 42°C (107°F). Circling NA west of Rwy 1-19. When VGSI inop, procedure NA at night. Rwy 28 helicopter visibility reduction below 1 SM NA.</p>	<p>MISSED APPROACH: Climb to 3500 direct ZEJAY and on track 305° to MARIA and hold.</p>
-----------	--	---

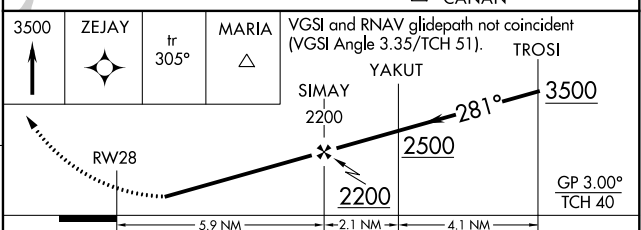
D-ATIS <b>120.45</b>	ALBANY APP CON <b>132.825 307.2</b>	ALBANY TOWER <b>119.5 257.8</b>	GND CON <b>121.7 348.6</b>	CLNC DEL <b>127.50</b>
-------------------------	--	------------------------------------	-------------------------------	---------------------------



ELEV 285	<b>D</b>	TDZE 285
----------	----------	----------



Procedure NA for arrivals at CANAN on V487 southwest bound and V130 southeast bound.



CATEGORY	A	B	C	D
LPV DA	783-1 <sup>3</sup> / <sub>4</sub> 498 (500-1 <sup>3</sup> / <sub>4</sub> )			
LNAV/VNAV DA	825-1 <sup>7</sup> / <sub>8</sub> 540 (600-1 <sup>7</sup> / <sub>8</sub> )			
LNAV MDA	760-1	475 (500-1)	760-1 <sup>3</sup> / <sub>8</sub>	475 (500-1 <sup>3</sup> / <sub>8</sub> )
<b>C</b> CIRCLING	820-1	535 (600-1)	820-1 <sup>1</sup> / <sub>2</sub> 535 (600-1 <sup>1</sup> / <sub>2</sub> )	960-2 <sup>1</sup> / <sub>4</sub> 675 (700-2 <sup>1</sup> / <sub>4</sub> )

NE-2, 25 FEB 2021 to 25 MAR 2021

NE-2, 25 FEB 2021 to 25 MAR 2021