

VOR ALI 114.5	APP CRS 325°	Rwy Idg 5997
		TDZE 174
		Apt Elev 178

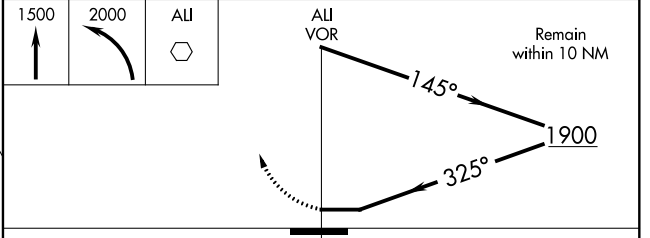
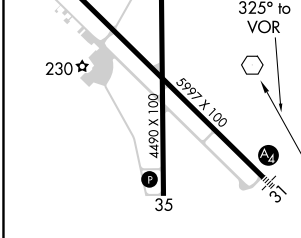
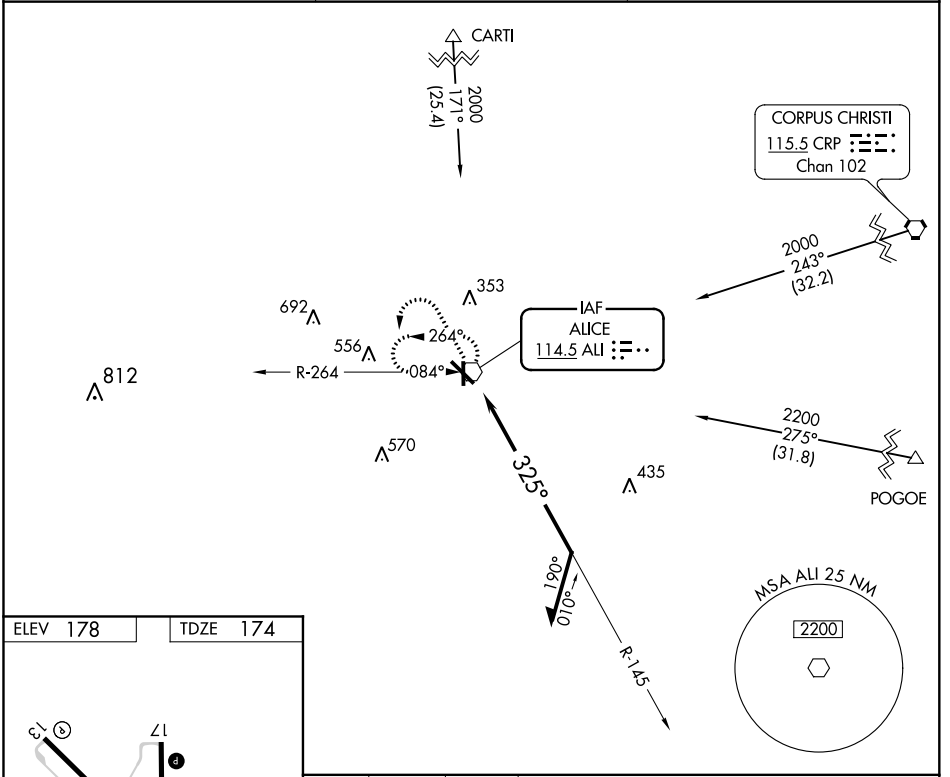
VOR RWY 31

ALICE INTL (ALI)

⚠ When local altimeter setting not received, use Nueces County altimeter setting: increase all MDAs 60 feet and visibility S-31 Cats C and D ¼ mile. Visibility reduction by helicopters NA. For inop ALS when using Nueces County altimeter setting, increase S-31 Cats C, D visibility to 1 ½ SM. For inop ALS, increase S-31 Cats C, D visibility to 1 ¾ SM.

MALS
 MISSED APPROACH: Climb to 1500 then climbing left turn to 2000 direct ALI VOR and hold.

ASOS 119.225	KINGSVILLE APP CON ★ 119.9 290.45	UNICOM 123.0 (CTAF) ①
------------------------	---	---------------------------------



CATEGORY	A	B	C	D
S-31	620-¾	446 (500-¾)	620-1	446 (500-1)
CIRCLING	620-1 442 (500-1)	640-1 462 (500-1)	660-1½ 482 (500-1½)	740-2 562 (600-2)

SC-3, 25 FEB 2021 to 25 MAR 2021

SC-3, 25 FEB 2021 to 25 MAR 2021