

WAAS CH 72805 W02A	APP CRS 016°	Rwy Idg TDZE 1173 Apt Elev 1194	6527
--	------------------------	---	-------------

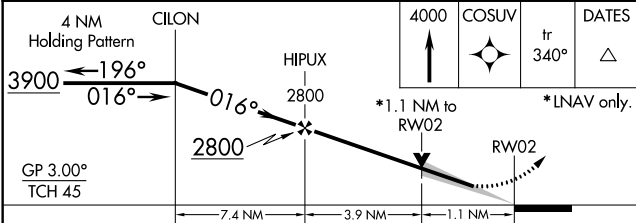
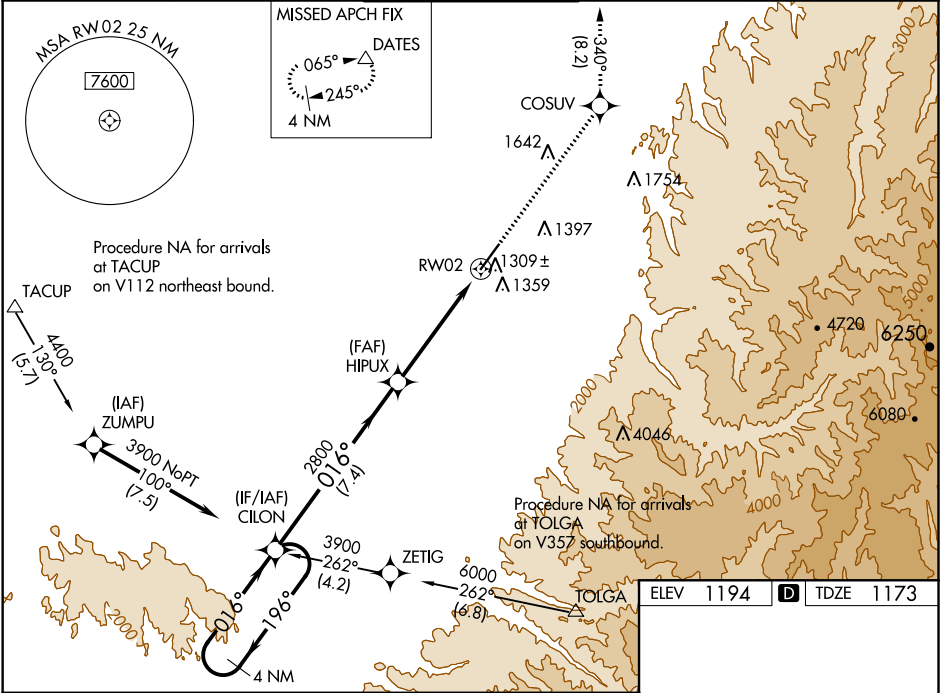
RNAV (GPS) RWY 2

WALLA WALLA RGNL (ALW)

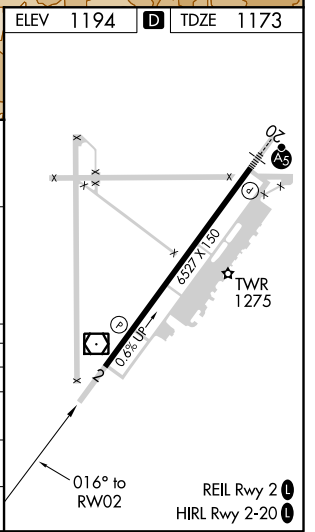
▽ For uncompensated Baro-VNAV systems, LNAV/VNAV NA below -11°C (13°F) or above 54°C (130°F). DME/DME RNP-0.3 NA. When local altimeter setting not received, use Pendleton altimeter setting and increase all DA/MDA 120 feet and LPV all visibilities ¼ mile, LNAV/VNAV all visibilities ⅓ mile, LNAV Cats C/D visibility ⅓ mile, and Circling Cat C visibility ¼ mile. VDP and Baro-VNAV NA when using Pendleton altimeter setting.

MISSED APPROACH: Climb to 4000 direct COSUV and on track 340° to DATES and hold.

ASOS 135.875	CHINOOK APP CON ★ 133.15 379.15	WALLA WALLA TOWER ★ 118.5(CTAF) 289.4	GND CON 121.6 289.4	UNICOM 122.95
------------------------	---	---	-------------------------------	-------------------------



CATEGORY	A	B	C	D
LPV DA		1373-3/4	200 (200-3/4)	
LNAV/VNAV DA		1509-1 1/8	336 (400-1 1/8)	
LNAV MDA	1560-1	387 (400-1)	1560-1 1/8	387 (400-1 1/8)
C CIRCLING	1760-1 566 (600-1)	1820-1 626 (700-1)	2120-2 3/4 926 (1000-2 3/4)	2300-3 1106 (1200-3)



NW-1, 25 FEB 2021 to 25 MAR 2021

NW-1, 25 FEB 2021 to 25 MAR 2021