

HI-VOR or TACAN RWY 22

| | | |
|---|-------------------------|---|
| VORTAC PNH 116.6 Chan 113 | APCH CRS 235° | Rwy Idg 13,502 TDZE 3606 Arprt Elev 3607 |
|---|-------------------------|---|

JAL-19 [USAF]

RICK HUSBAND AMARILLO INTL (KAMA)

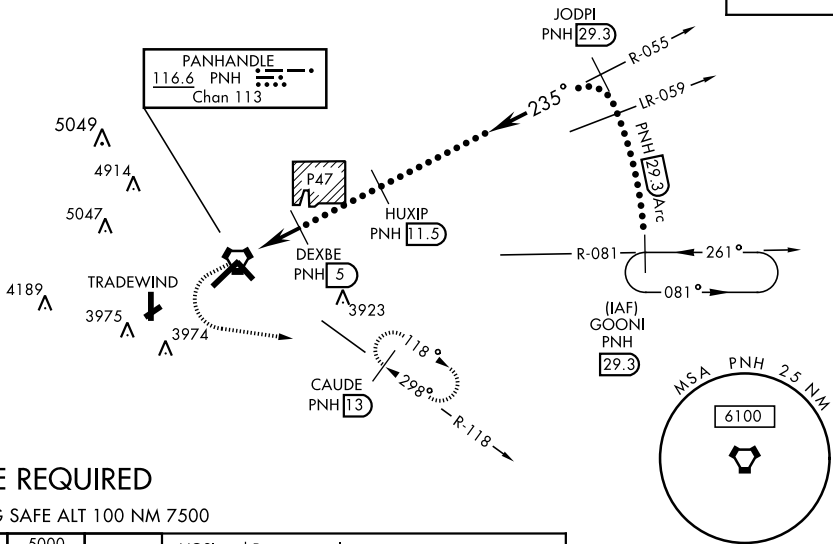
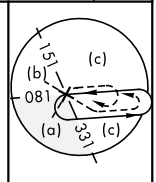
▼ * When ALS inop, increase CAT CDE vis to 1½ mile.
** When ALS inop, increase CAT CDE vis to 1¼ mile.
ALT MINS N/A when local altimeter not available.



MISSED APPROACH: Climb to 4100 then climbing left turn to 5000 on heading 090° and PNH VOTRAC R-118 to CAUDE INT/PNH 13 DME and hold.

| | | | | | |
|-----------------------------|--|---|-------------------------------|-----------------------------------|-----|
| ATIS 118.85 350.3 | AMARILLO APP CON 119.5 307.0 | AMARILLO TOWER★ 118.3 0 257.9 | GND CON 121.9 348.6 | CLNC DEL 121.65 239.275 | ASR |
|-----------------------------|--|---|-------------------------------|-----------------------------------|-----|

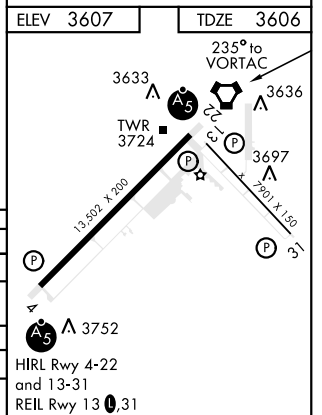
When local altimeter setting not received, use Borger altimeter setting.



DME REQUIRED

EMERG SAFE ALT 100 NM 7500

| | | | | | |
|--------------------------|-----------------------------|-----------------------------|--|-------------|--------------|
| 4100 | 5000 | PNH R-118 | VGSI and Descent angles not coincident | JODPI R-055 | GOONI R-081 |
| ↑ | hdg 090° | | | 29.3 | 29.3 |
| VORTAC | | DEXBE 5 | HUXIP 11.5 | JODPI 29.3 | GOONI 17,000 |
| UYOMU 5 | | 5300 | 6000 | 14,000 | Arc 29 |
| 0.7 NM | | 4.5 NM | | | |
| CATEGORY | C | D | E | | |
| S-22 * | 4000-5/8 394 (400-3/8) | | | | |
| CIRCLING | 4240-13/4 633 (700-13/4) | 4280-21/4 673 (700-21/4) | 4460-3 853 (900-3) | | |
| BORGER ALTIMETER SETTING | | | | | |
| S-22 ** | 4160-11/8 554 (600-11/8) | | | | |
| CIRCLING | 4400-21/4 793 (800-21/4) | 4420-23/4 813 (900-23/4) | 4620-3 1013 (1100-3) | | |



HI-VOR or TACAN RWY 22

SC-2, 25 FEB 2021 to 25 MAR 2021

SC-2, 25 FEB 2021 to 25 MAR 2021