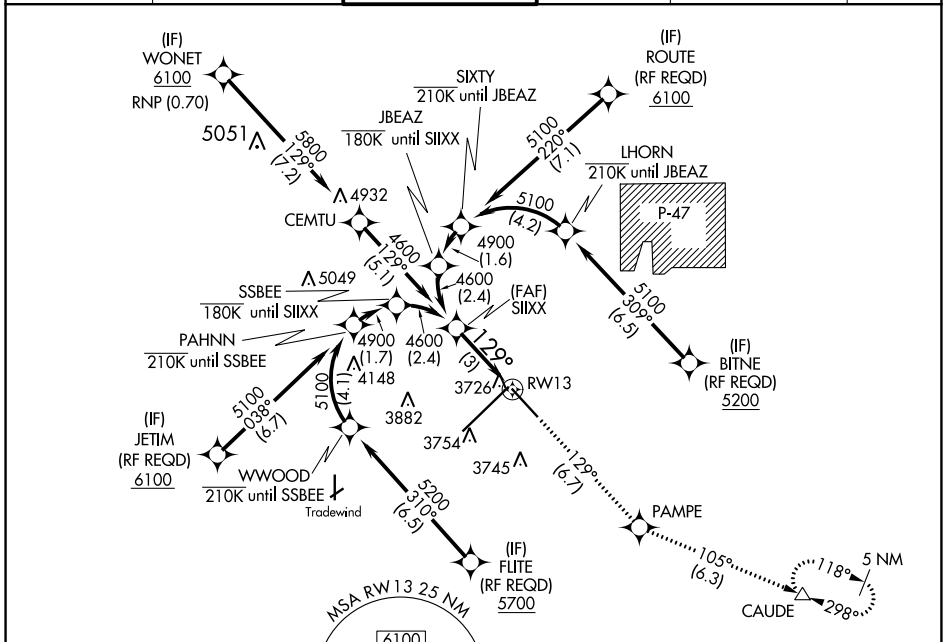


APP CRS <b>129°</b>	Rwy Idg <b>7901</b>
	TDZE <b>3603</b>
	Apt Elev <b>3607</b>

**RNAV (RNP) Z RWY 13**  
RICK HUSBAND AMARILLO INTL (AMA)

<p><b>ASR</b> For uncompensated Baro-VNAV systems, procedure NA below -14°C (7°F) or above 51°C (124°F). GPS required.</p>	<p><b>MISSED APPROACH:</b> Climb to 5400 on track 129° to PAMPE and track 105° to CAUDE and hold.</p>
--	---

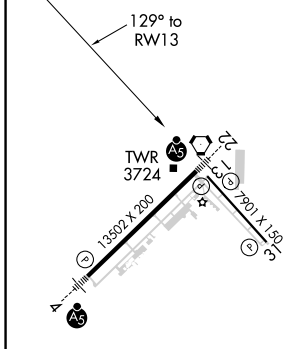
ATIS <b>118.85 350.3</b>	AMARILLO APP CON* <b>119.5 307.0</b>	AMARILLO TOWER* <b>118.3(CTAF) 257.9</b>	GND CON <b>121.9 348.6</b>	CLNC DEL <b>121.65 239.275</b>	UNICOM <b>122.95</b>
-----------------------------	---	---	-------------------------------	-----------------------------------	-------------------------



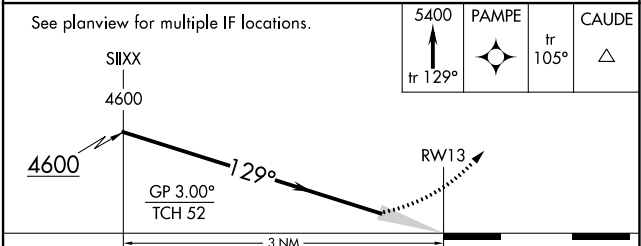
SC-2, 25 FEB 2021 to 25 MAR 2021

SC-2, 25 FEB 2021 to 25 MAR 2021

ELEV 3607	<b>D</b>	TDZE 3603
-----------	----------	-----------



**RNAV 1 - GPS or RADAR REQUIRED**



CATEGORY	A	B	C	D
RNP 0.30 DA		3976-1¼	373 (400-1¼)	

**AUTHORIZATION REQUIRED**