

WAAS CH 58028 W27A	APP CRS 275°	Rwy Idg TDZE Apt Elev	5004 753 754
--	------------------------	-----------------------------	---

RNAV (GPS) RWY 27

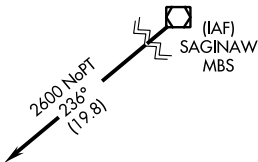
GRATIOT COMMUNITY (AMN)

RNP APCH.
 ⚠ For uncompensated Baro-VNAV systems, LNAV/VNAV NA below -16°C or above 54°C.

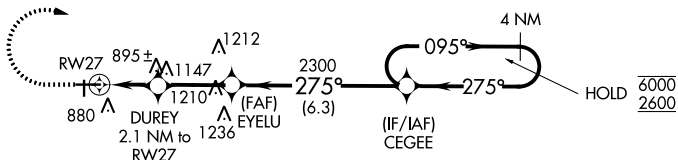
MISSED APPROACH: Climb to 1900 then climbing right turn 2600 direct CEGEE and hold.

AWOS-3 124.175	GREAT LAKES APP CON ★ 126.45 235.625	CLNC DEL 119.25	UNICOM 122.8 (CTAF) 0
--------------------------	--	---------------------------	---------------------------------

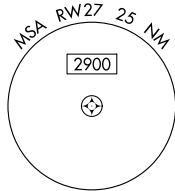
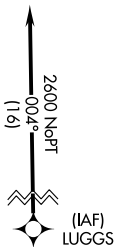
Procedure NA for arrival on MBS
 VOR/DME airway radials 238 CW 320.



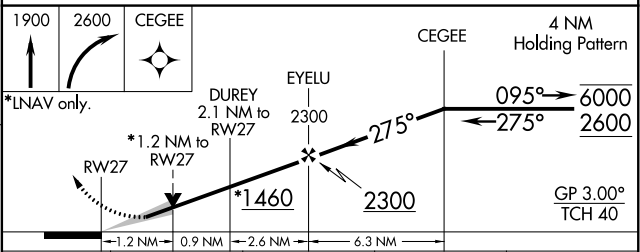
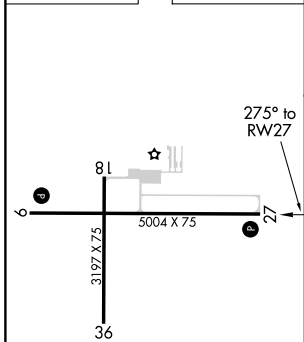
△ 1270



△ 1850



ELEV 754	TDZE 753
----------	----------



CATEGORY	A	B	C	D
LPV DA		1003-1	250 (300-1)	
LNAV/VNAV DA		1036-1	283 (300-1)	
LNAV MDA	1160-1	407 (500-1)	1160-1 1/8	407 (500-1 1/8)

REIL Rwy 9 and 27
 MIRL Rwy 9-27 and 18-36

EC-1, 25 FEB 2021 to 25 MAR 2021

EC-1, 25 FEB 2021 to 25 MAR 2021