

LOC I-ANB 111.5	APP CRS 052°	Rwy Idg TDZE Apt Elev	7000 595 612
---------------------------	------------------------	-----------------------------	---

ILS Y or LOC Y RWY 5

ANNISTON RGNL (ANB)

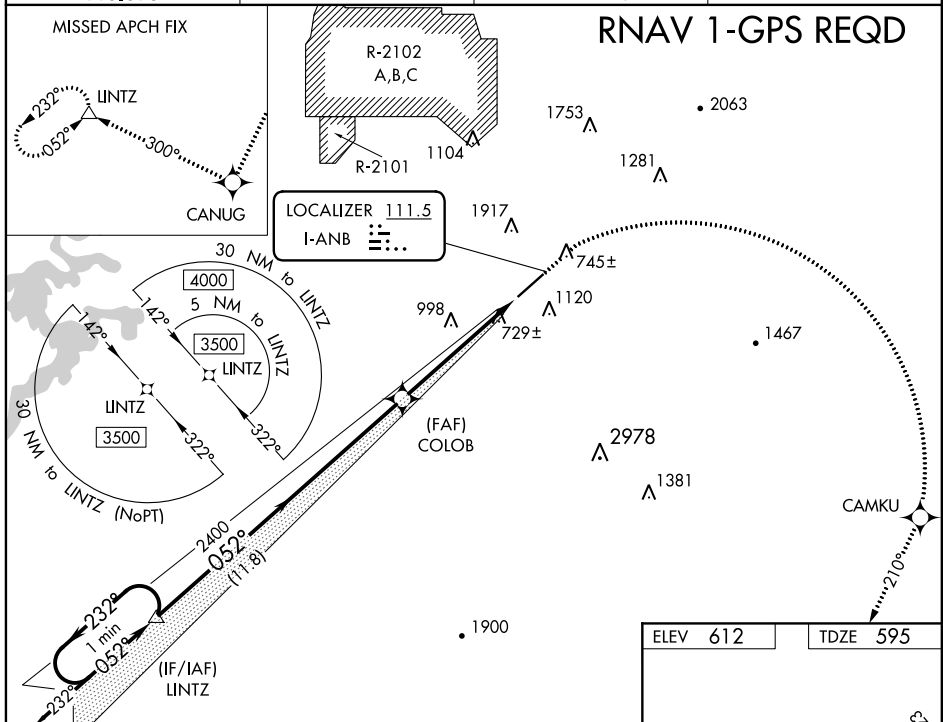
⚠ Circling NA north of Rwy 5-23. RNAV 1-GPS required. For inop ALS, increase S-ILS 5 all Cats visibility to 1 SM. When local altimeter setting not received, use Gadsden altimeter setting: increase DA to 975 and all visibilities ¼ SM; increase all MDAs 80 feet, and S-LOC 5 Cat C/D, and Circling Cat C visibilities ½ SM. For inop ALS when using Gadsden altimeter setting: increase S-ILS 5 all Cats to 1¼ SM.

MALSR



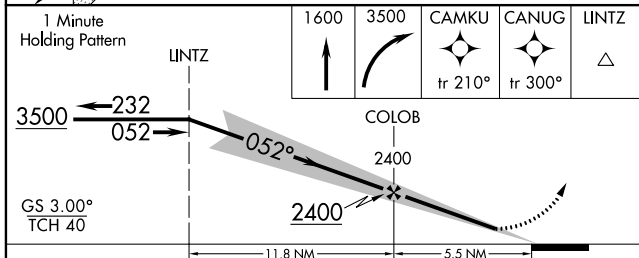
MISSED APPROACH: Climb to 1600 then climbing right turn to 3500 direct CAMKU then on track 210° to CANUG and on track 300° to LINTZ and hold.

ASOS 119.675	BIRMINGHAM APP CON 132.15 285.45	CTAF 123.6	UNICOM 123.0
------------------------	--	----------------------	------------------------



SE-4, 25 FEB 2021 to 25 MAR 2021

SE-4, 25 FEB 2021 to 25 MAR 2021



ELEV 612	TDZE 595
REIL Rwy 23 HIRL Rwy 5-23	
FAF to MAP 5.5 NM	
Knots	60 90 120 150 180
Min:Sec	5:30 3:40 2:45 2:12 1:50

CATEGORY	A	B	C	D
S-ILS 5	909-½ 314 (300-½)			
S-LOC 5	1120-½	525 (600-½)	1120-1	525 (600-1)
C CIRCLING	1420-1	808 (900-1)	1420-2¼ 808 (900-2¼)	1820-3 1208 (1300-3)