

WAAS CH <b>90540</b> <b>W23A</b>	APP CRS <b>231°</b>	Rwy Idg TDZE <b>6002</b> 754 Apt Elev <b>782</b>
--	------------------------	---

# RNAV (GPS) RWY 23

ANDERSON RGNL (AND)

RNP APCH.

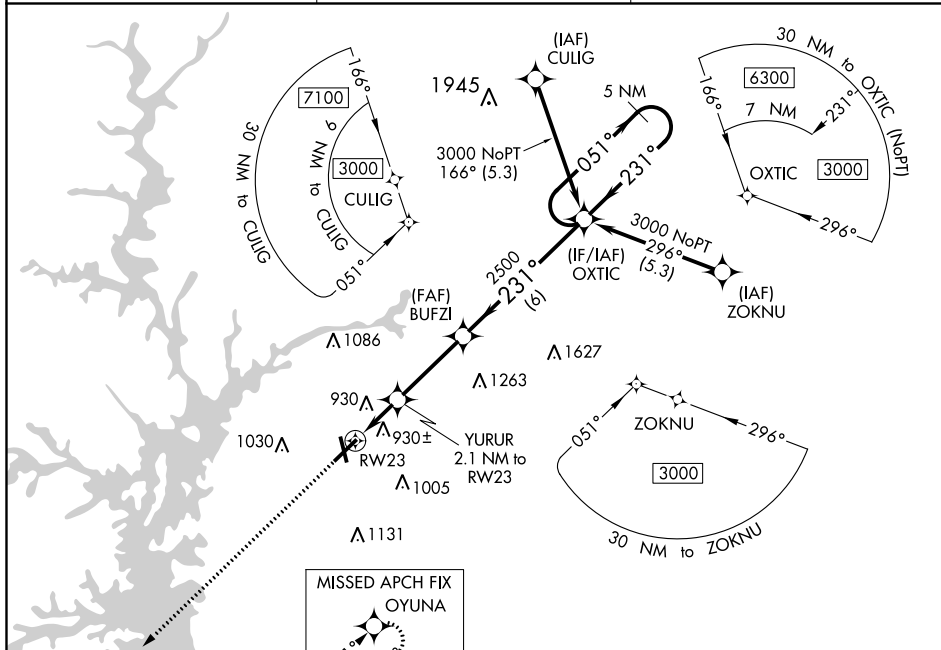
- ▼ For uncompensated Baro-VNAV systems, LNAV/VNAV NA below -8°C or above 54°C.
- ▲ Circling Rwy 17, 35 NA at night. Rwy 23 helicopter visibility reduction below ¾ SM NA.

MISSED APPROACH:  
Climb to 2500 direct  
OYUNA and hold.

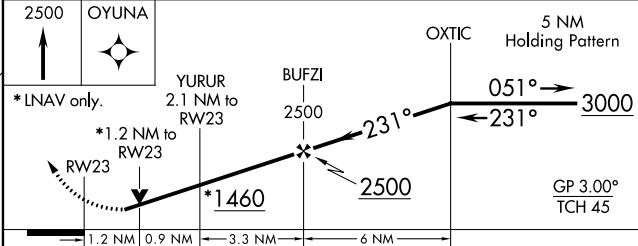
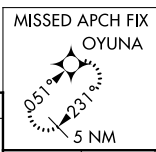
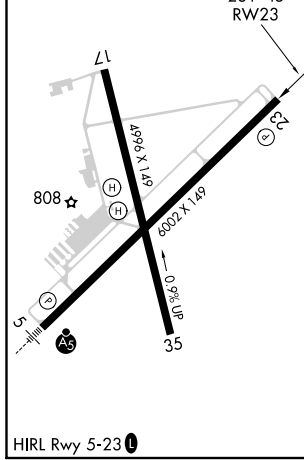
ASOS  
**120.675**

GREER APP CON ★  
**118.8 270.275**

CTAF  
**123.6**



ELEV <b>782</b>	TDZE <b>754</b>
-----------------	-----------------



CATEGORY	A	B	C	D
LPV DA	1109-1		355 (400-1)	
LNAV/VNAV DA	1218-1 <sup>3</sup> / <sub>8</sub>		464 (500-1 <sup>3</sup> / <sub>8</sub> )	
LNAV MDA	1180-1	426 (400-1)	1180-1 <sup>1</sup> / <sub>4</sub>	426 (400-1 <sup>1</sup> / <sub>4</sub> )
<b>C</b> CIRCLING	1260-1 478 (500-1)	1320-1 538 (600-1)	1440-1 <sup>3</sup> / <sub>4</sub> 658 (700-1 <sup>3</sup> / <sub>4</sub> )	1500-2 <sup>1</sup> / <sub>4</sub> 718 (800-2 <sup>1</sup> / <sub>4</sub> )

SE-2, 25 FEB 2021 to 25 MAR 2021

SE-2, 25 FEB 2021 to 25 MAR 2021