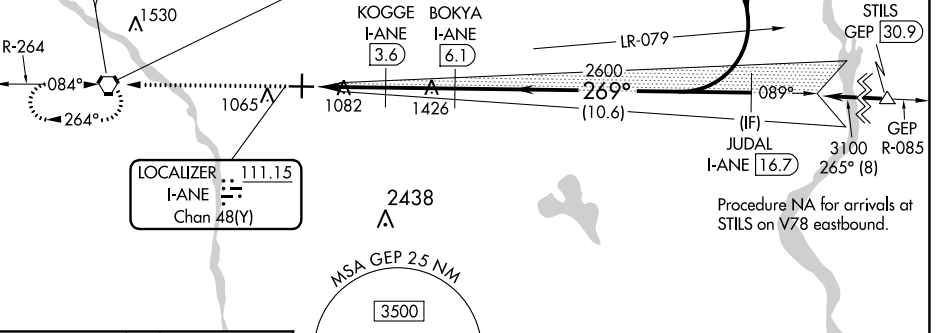


LOC/DME I-ANE <b>111.15</b> Chan 48 (Y)	APP CRS <b>269°</b>	Rwy Idg TDZE Apt Elev	<b>5000</b> <b>910</b> <b>912</b>
---	------------------------	-----------------------------	---

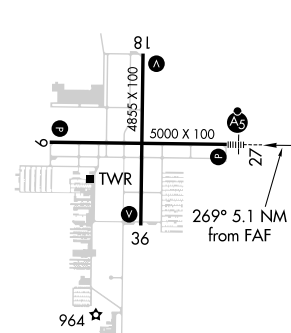
**ILS or LOC RWY 27**  
ANOKA COUNTY-BLAINE (JANES FIELD) (A.N.E.)

DME required.		MALSR 	MISSED APPROACH: Climb to 2700 direct GEP VORTAC and hold.			
ATIS <b>120.625</b>	MINNEAPOLIS APP CON <b>126.5 335.65</b>	ANOKA TOWER* <b>132.4</b> (CTAF)	GND CON <b>121.85</b>	CLNC DEL <b>121.3</b>	MINNEAPOLIS CLNC DEL <b>121.85</b> (When tower closed)	UNICOM <b>122.95</b>

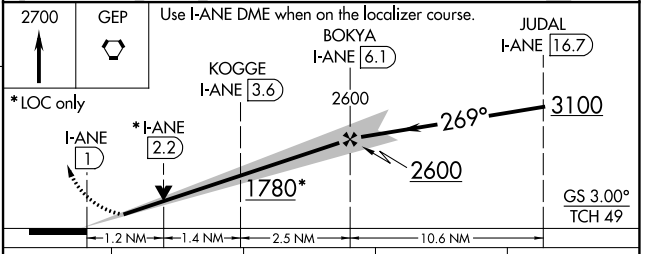
ALTERNATE MISSED APCH FX



ELEV 912	TDZE 910
----------	----------



HIRL Rwy 9-27
MIRL Rwy 18-36
REIL Rwys 9, 18, and 36



CATEGORY	A	B	C	D
S-ILS 27	1110-1/2 200 (200-1/2)			
S-LOC 27	1340-1/2	430 (500-1/2)	1340-3/4 430 (500-3/4)	1340-1 430 (500-1)
CIRCLING	1400-1	488 (500-1)	1460-1 1/2 548 (600-1 1/2)	1580-2 668 (700-2)

NC-1, 25 FEB 2021 to 25 MAR 2021

NC-1, 25 FEB 2021 to 25 MAR 2021