

VOR/DME ANW 112.7 Chan 74	APP CRS 008°	Rwy Idg TDZE Apt Elev	6824 2589 2589
---	------------------------	-----------------------------	---

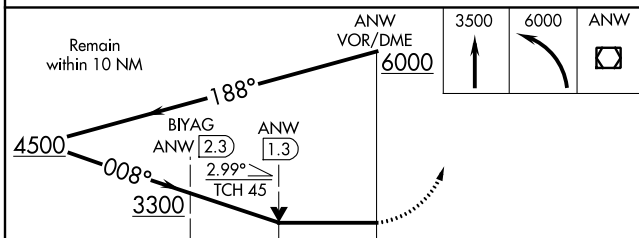
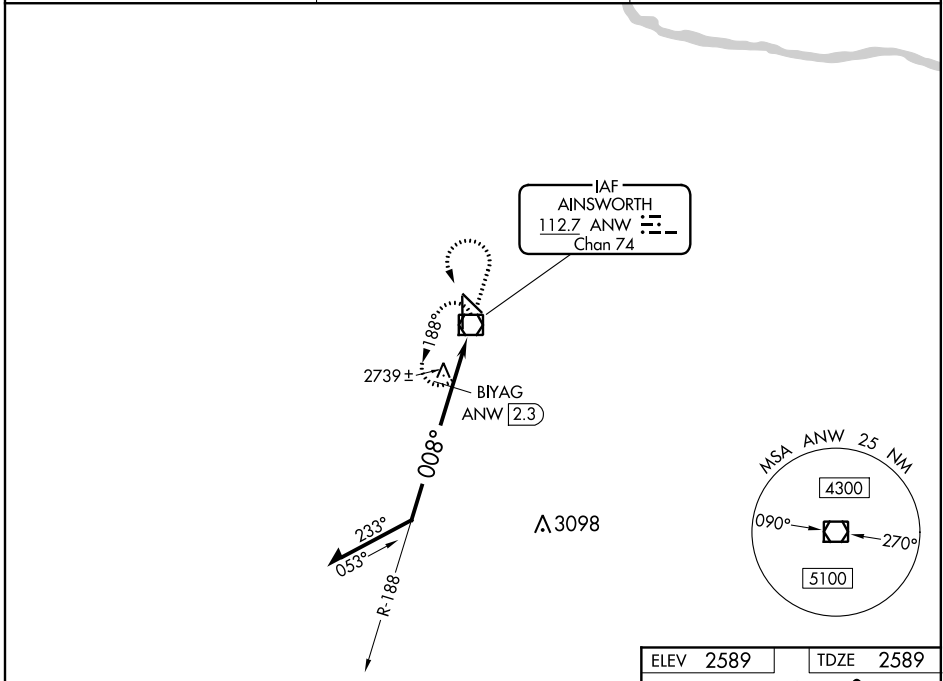
VOR RWY 35

AINSWORTH RGNL (ANW)

⚠ When local altimeter setting not received, procedure NA.
⚠ For inoperative ALS, increase BIYAG fix minimums S-35 Cat D visibility to 1¼.

⚠ MISSED APPROACH: Climb to 3500 then climbing left turn to 6000 direct ANW VOR/DME and hold.

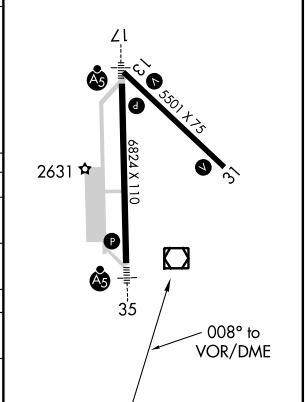
AWOS-3 118,325	DENVER CENTER 127.95 338.2	UNICOM 122.8 (CTAF)
--------------------------	--------------------------------------	-------------------------------



CATEGORY	A	B	C	D
S-35	3300-½	711 (800-½)	3300-1½ 711 (800-1½)	3300-1¾ 711 (800-1¾)
C CIRCLING	3300-1	711 (800-1)	3300-2 711 (800-2)	3300-2¼ 711 (800-2¼)
BIYAG FIX MINIMUMS (DME REQUIRED)				
S-35	3000-½	411 (500-½)	3000-¾ 411 (500-¾)	3000-1 411 (500-1)
C CIRCLING	3000-1 411 (500-1)	3040-1 451 (500-1)	3040-1½ 451 (500-1½)	3200-2 611 (700-2)

ELEV 2589	TDZE 2589
-----------	-----------

HIRL Rwy 13-31 and 17-35
REIL Rwy 31



NC-2, 25 FEB 2021 to 25 MAR 2021

NC-2, 25 FEB 2021 to 25 MAR 2021