

LOC I-AOH <b>109.3</b>	APP CRS <b>276°</b>	Rwy Idg TDZE Apt Elev	<b>6000</b> <b>975</b> <b>975</b>
---------------------------	------------------------	-----------------------------	---

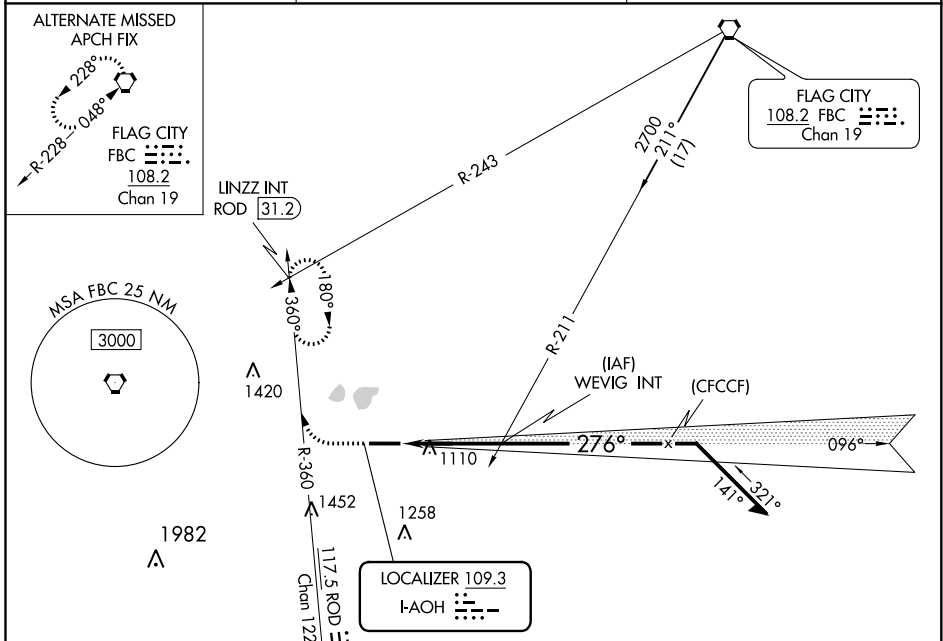
# ILS or LOC RWY 28

LIMA ALLEN COUNTY (AOH)

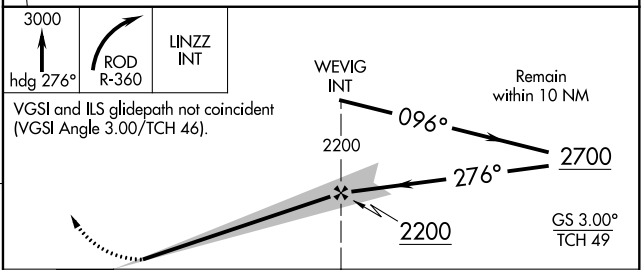
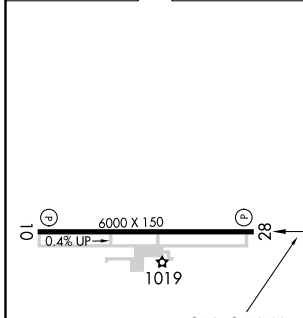
**NA** When local altimeter setting not received, use Findlay altimeter setting and increase all DA/MDA 80 feet. Increase ILS all Cats visibility 1/8 mile, S-LOC Cat C/D and Circling Cat C visibility 1/4 mile.

MISSED APPROACH: Climb to 3000 on heading 276° and right turn on ROD VORTAC R-360 to LINZZ INT/ROD 31.2 DME and hold.

ASOS <b>128.725</b>	COLUMBUS APP CON <b>118.425 323.15</b>	UNICOM <b>122.7 (CTAF) 0</b>
------------------------	---	---------------------------------



ELEV 975	TDZE 975
----------	----------



	A		B		C		D	
S-ILS 28	1175-3/4		200 (200-3/4)					
S-LOC 28	1500-1	525 (600-1)	1500-1 1/2	525 (600-1 1/2)				
CIRCLING	1500-1	525 (600-1)	1500-1 1/2	525 (600-1 1/2)	1540-2	565 (600-2)		

EC-2, 25 FEB 2021 to 25 MAR 2021

EC-2, 25 FEB 2021 to 25 MAR 2021