

WAAS CH 82529 W03A	APP CRS 026°	Rwy Idg TDZE 1503 Apt Elev 1503	5465
--	------------------------	---	-------------

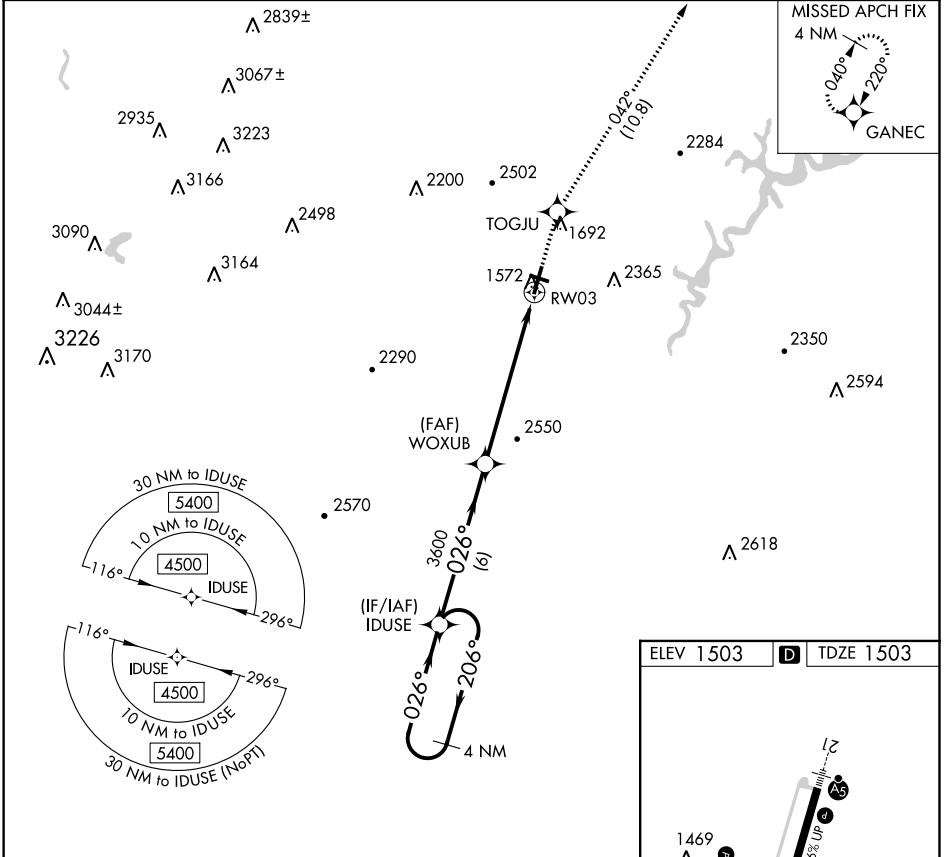
RNAV (GPS) Z RWY 3

ALTOONA-BLAIR COUNTY (A00)

▼ Rwy 3 helicopter visibility reduction below 3/4 SM NA. DME/DME RNP-0.3 NA. When local altimeter setting not received, use Bedford County altimeter setting and increase all DA 84 feet, and increase all visibilities 3/8 mile.

▲ NA MISSED APPROACH: Climb to 5000 direct TOGJU and on track 042° to GANEC and hold, continue climb-in-hold to 5000.

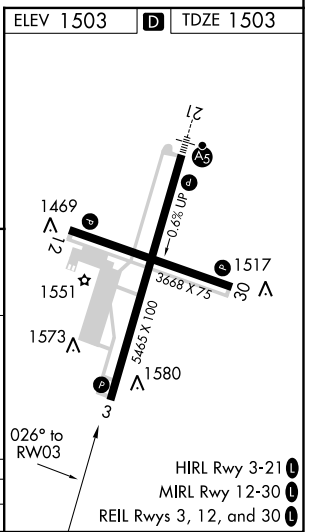
ASOS 127.125	JOHNSTOWN APP CON * 121.2 299.2	CTAF 123.6	UNICOM 123.0
------------------------	---	----------------------	------------------------



NE-4, 25 FEB 2021 to 25 MAR 2021

NE-4, 25 FEB 2021 to 25 MAR 2021

4 NM Holding Pattern IDUSE		5000	TOGJU	tr 042°	GANEC
4500	← 206°	→ 026°	→ 026°	→ 026°	
GP 3.00°		3600	WOXUB	RW03	
TCH 55		6 NM	6.4 NM		
CATEGORY	A	B	C	D	
LPV DA		1828-1	325 (400-1)		



HIRL Rwy 3-21
MIRL Rwy 12-30
REIL Rws 3, 12, and 30