

(EXTAN6.SHAYK) 20030

EXTAN SIX DEPARTURE (RNAV)

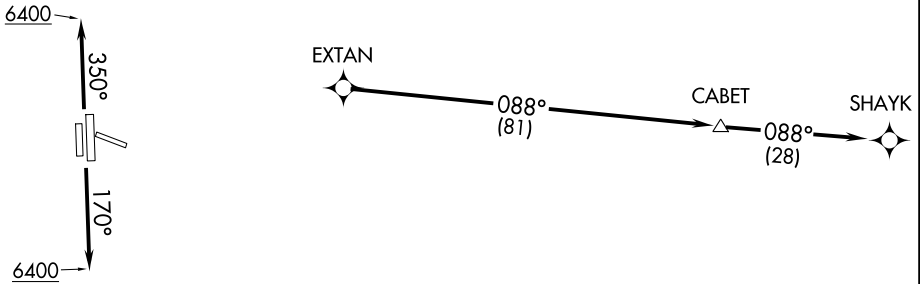
AL-5715 (FAA)

CENTENNIAL (APA)
DENVER, COLORADO

ATIS
120.3
CLNC DEL
128.6
DENVER DEP CON
132.75 269.3

**TOP ALTITUDE:
FL230**

- NOTE: DME/DME/IRU or GPS required.
- NOTE: RNAV 1.
- NOTE: Turbojets only.
- NOTE: RADAR required.
- NOTE: Accelerate to at or above 250K above 10000. If slower speed is required to meet crossing restrictions advise CLNC DEL prior to taxi.
- NOTE: For non-GPS equipped aircraft TXC DME must be operational.



SW-1, 25 FEB 2021 to 25 MAR 2021

SW-1, 25 FEB 2021 to 25 MAR 2021

TAKEOFF MINIMUMS

- Rwys 10, 28: NA-ATC.
- Rwys 35L/R: Standard.
- Rwy 17L: Standard with minimum climb of 255' per NM to 8000.
- Rwy 17R: Standard with minimum climb of 370' per NM to 8000.

NOTE: Chart not to scale.



DEPARTURE ROUTE DESCRIPTION

TAKEOFF RUNWAYS 17L/R: Climb on heading 170° to 6400, then continue climb on heading 170° or as assigned by ATC, thence . . .

TAKEOFF RUNWAYS 35L/R: Climb on heading 350° to 6400, then continue climb on heading 350° or as assigned by ATC, thence . . .

. . .RADAR vectors to EXTAN, then on depicted route to SHAYK. Maintain FL230 or filed lower altitude, expect higher filed altitude 10 minutes after departure.

EXTAN SIX DEPARTURE (RNAV)

(EXTAN6.SHAYK) 30JAN20

DENVER, COLORADO
CENTENNIAL (APA)