

WAAS CH 69314 W23A	APP CRS 227°	Rwy ldg TDZE Apt Elev	5000 8 8
--	------------------------	-----------------------------	-------------------------------------

RNAV (GPS) RWY 23

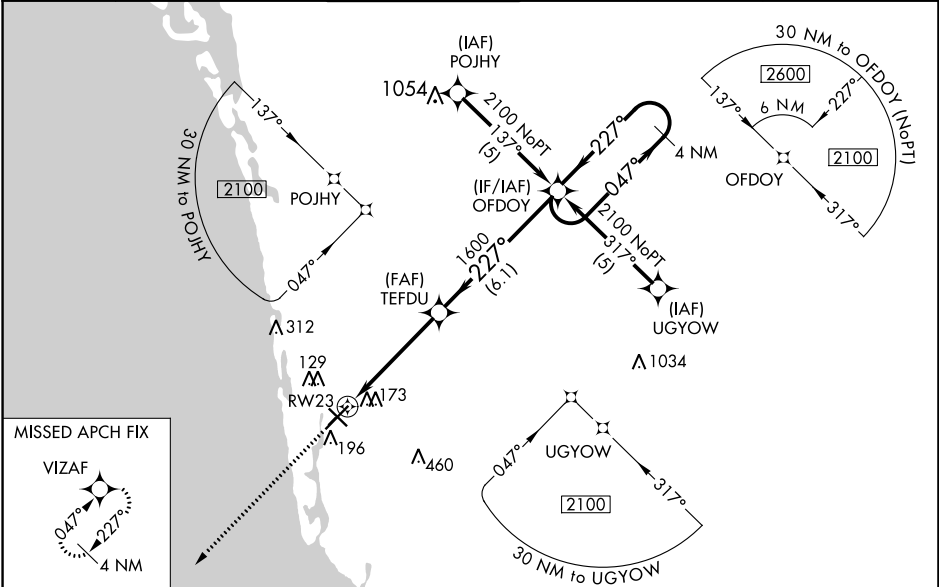
NAPLES MUNI (APF)

RNP APCH.

⚠ Inoperative table does not apply. Baro-VNAV NA when using Southwest Florida Intl altimeter setting. For uncompensated Baro-VNAV systems, LNAV/VNAV NA below -15°C or above 54°C. Rwy 23 helicopter visibility reduction below 3/4 SM NA. When local altimeter setting not received, use Southwest Florida Intl altimeter setting and increase all DA 56 feet and all MDA 60 feet, increase LPV and LNAV/VNAV all Cats visibility 1/4 mile.

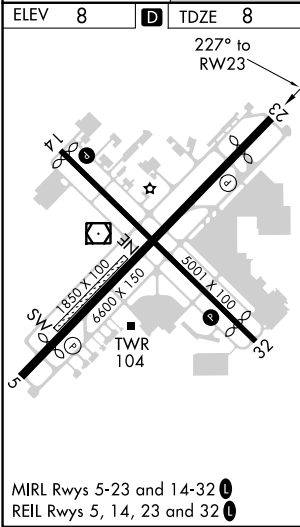
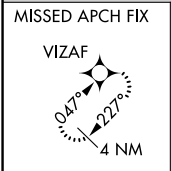
MISSED APPROACH: Climb to 2100 direct VIZAF and hold.

ATIS 134.225	FORT MYERS APP CON* 124.125 371.85	NAPLES TOWER* 128.5 (CTAF) 0	GND CON 121.6	CLNC DEL 118.0	CLNC DEL 124.125 (When twr closed)
------------------------	--	--	-------------------------	--------------------------	---



SE-3, 25 FEB 2021 to 25 MAR 2021

SE-3, 25 FEB 2021 to 25 MAR 2021



ELEV 8	D	TDZE 8		
2100	VIZAF			
*LNAV only.				
RW23	TEFDU	OFDOY		
1.2 NM	3.6 NM	6.1 NM		
2100	OFDOY	2100		
4 NM Holding Pattern				
GP 3.00° TCH 44				
CATEGORY	A	B	C	D
LPV DA	313-1 305 (400-1)			
LNAV/VNAV DA	461-1½ 453 (500-1½)			
LNAV MDA	440-1	432 (500-1)	440-1¼ 432 (500-1¼)	440-1½ 432 (500-1½)
C CIRCLING	500-1	492 (500-1)	680-2 672 (700-2)	820-2¾ 812 (900-2¾)