

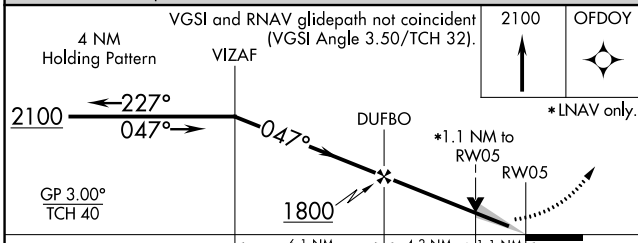
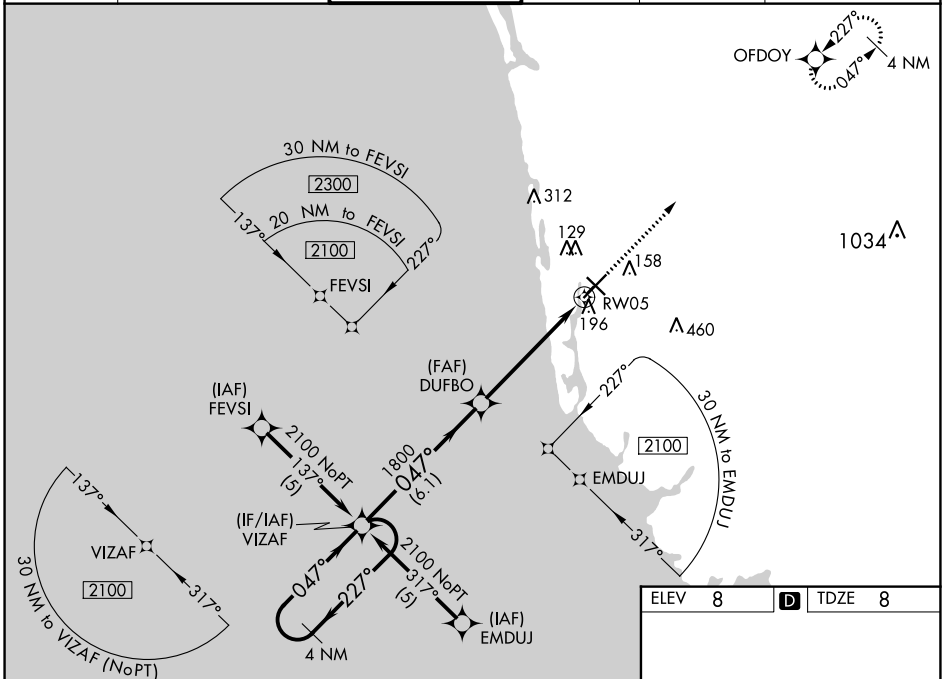
WAAS CH 73015 W05A	APP CRS 047°	Rwy ldg TDZE Apt Elev	5000 8 8
--	------------------------	-----------------------------	-------------------------------------

RNAV (GPS) RWY 5

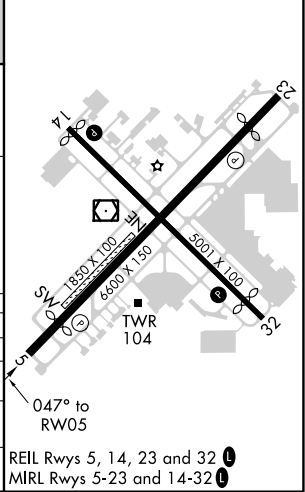
NAPLES MUNI (APF')

RNP APCH.	<p>Baro-VNAV NA when using Southwest Florida Intl altimeter setting.</p> <p>For uncompensated Baro-VNAV systems, LNAV/VNAV NA below -1.5°C or above 54°C.</p> <p>When local altimeter setting not received, use Southwest Florida Intl altimeter setting and increase all DA 56 feet and all MDA 60 feet, increase LPV, LNAV/VNAV all Cats and LNAV Cats C/D visibility ¼ mile.</p>	MISSED APPROACH: Climb to 2100 direct OFDOY and hold.
-----------	---	---

ATIS 134.225	FORT MYERS APP CON* 124.125 371.85	NAPLES TOWER* 128.5 (CTAF) 0	GND CON 121.6	CLNC DEL 118.0	CLNC DEL 124.125 (When twr closed)
------------------------	--	--	-------------------------	--------------------------	---



ELEV 8	TDZE 8
--------	--------



CATEGORY	A	B	C	D
LPV DA	295-1 287 (300-1)			
LNAV/VNAV DA	446-1½ 438 (500-1½)			
LNAV MDA	460-1	452 (500-1)	460-1⅜ 452 (500-1⅜)	460-1½ 452 (500-1½)
CIRCLING	500-1	492 (500-1)	680-2 672 (700-2)	820-2¾ 812 (900-2¾)

SE-3, 25 FEB 2021 to 25 MAR 2021

SE-3, 25 FEB 2021 to 25 MAR 2021