

ALPENA, MICHIGAN

HI-ILS or LOC RWY 1

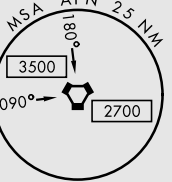
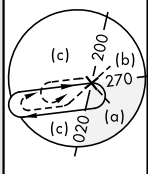
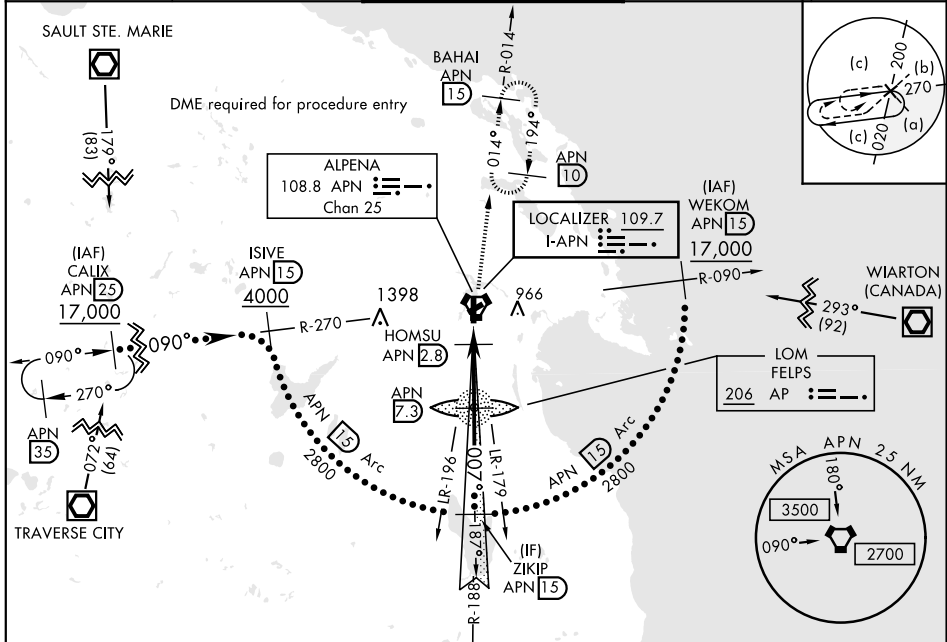
LOC I-APN 109.7	APCH CRS 007°	Rwy ldg TDZE Arprt Elev 9001 685 690	JAL-718 [USAF]	ALPENA COUNTY RGNL (KAPN)
---------------------------	-------------------------	--	----------------	---------------------------

⚠ * When ALS inop, increase vis to ¾ mile.
 ** When ALS inop, increase vis to 1 ½ miles.



MISSED APPROACH: Climb to 1300, then climbing right turn to 5000 on APN VORTAC R-014 to BAHAI/15 DME and hold. Continue climb-in-hold to 5000.

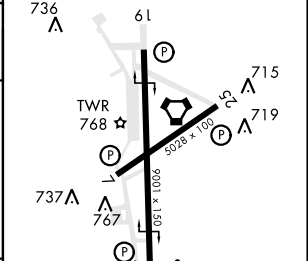
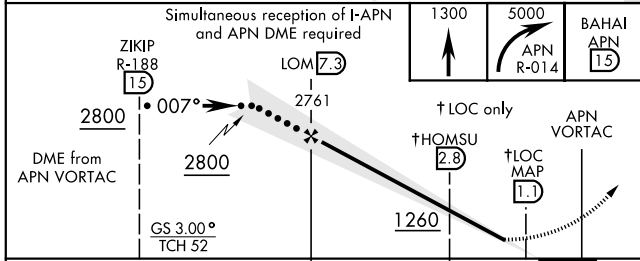
ASOS 120.675	ALPENA APP CON 128.425 379.3	ALPENA TOWER ★ 121.35 (CTAF) 318.1	GND CON 121.9 275.8	UNICOM 122.95
------------------------	--	--	-------------------------------	-------------------------



ELEV 690	TDZE 685
----------	----------

DME REQUIRED
 EMERG SAFE ALT 100 NM 4000

HIRL Rwy 1-19
 MIRL Rwy 7-25
 REIL Rwy 7-25, 19



CATEGORY	C	D	E		
S-ILS 1*	885-½	200	(200-½)		
S-LOC 1**	1140-7/8	455	(500-7/8)		
CIRCLING	1220-1½	1280-2	1320-2¼		
	530 (600-1½)	590 (600-2)	630 (700-2¼)		
FAF to MAP 6.3 NM					
Knots	120	140	160	180	200
Min:Sec	3:09	2:42	2:22	2:06	1:53

ALPENA, MICHIGAN 45°05'N-83°34'W ALPENA COUNTY RGNL (KAPN)

HI-ILS or LOC RWY 1



EC-1, 25 FEB 2021 to 25 MAR 2021

EC-1, 25 FEB 2021 to 25 MAR 2021

Amdt 5D 13AUG20