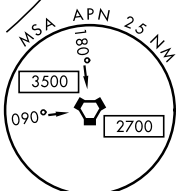
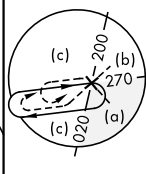
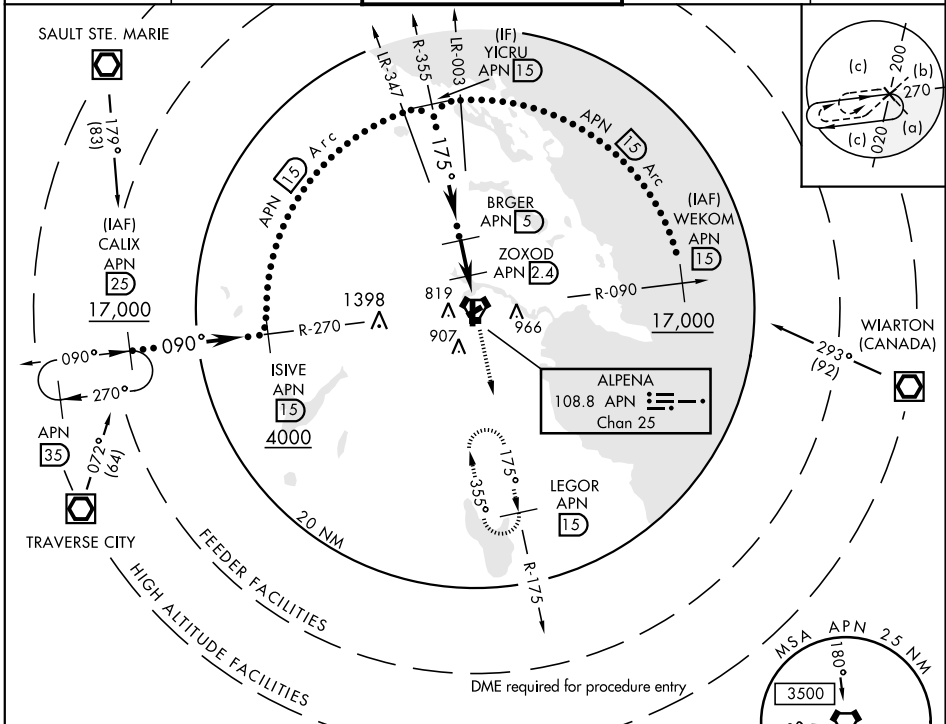


HI-TACAN RWY 19

VORTAC APN 108.8 Chan 25	APCH CRS 175°	Rwy ldg TDZE Arprt Elev 9001 683 690	JAL-718 [USAF]	ALPENA COUNTY RGNL (KAPN)
--	-------------------------	--	----------------	---------------------------

MISSED APPROACH: Climb to 5000 on APN R-175 to LEGOR (1.5 DME) and hold, continue climb in hold to 5000.

ASOS 120.675	ALPENA APP CON 128.425 379.3	ALPENA TOWER ★ 121.35 (CTAF) 0 318.1	GND CON 121.9 275.8	UNICOM 122.95
------------------------	--	--	-------------------------------	-------------------------



DME REQUIRED

EMERG SAFE ALT 100 NM 4000

YICRU R-355 1.5 2800	VGSIs and descent angles not coincident (VGSIs Angle 3.00/TCH 39)		5000	LEGOR APN 1.5	ELEV 690	TDZE 683
BRGER 5		ZOXOD 2.4	JUDBI 1	VORTAC		
3.23° TCH 55		2300	1380		REIL Rwy 7-25, 19	
		2.6 NM	1.4 NM	6 NM	HIRL Rwy 1-19	
CATEGORY	C	D	E		MIRL Rwy 7-25	
S-19	1140-1 3/8	457 (500-1 3/8)				
CIRCLING	1220-1 1/2 530 (600-1 1/2)	1280-2 590 (600-2)	1320-2 1/4 630 (700-2 1/4)			

HI-TACAN RWY 19

EC-1, 25 FEB 2021 to 25 MAR 2021

EC-1, 25 FEB 2021 to 25 MAR 2021