

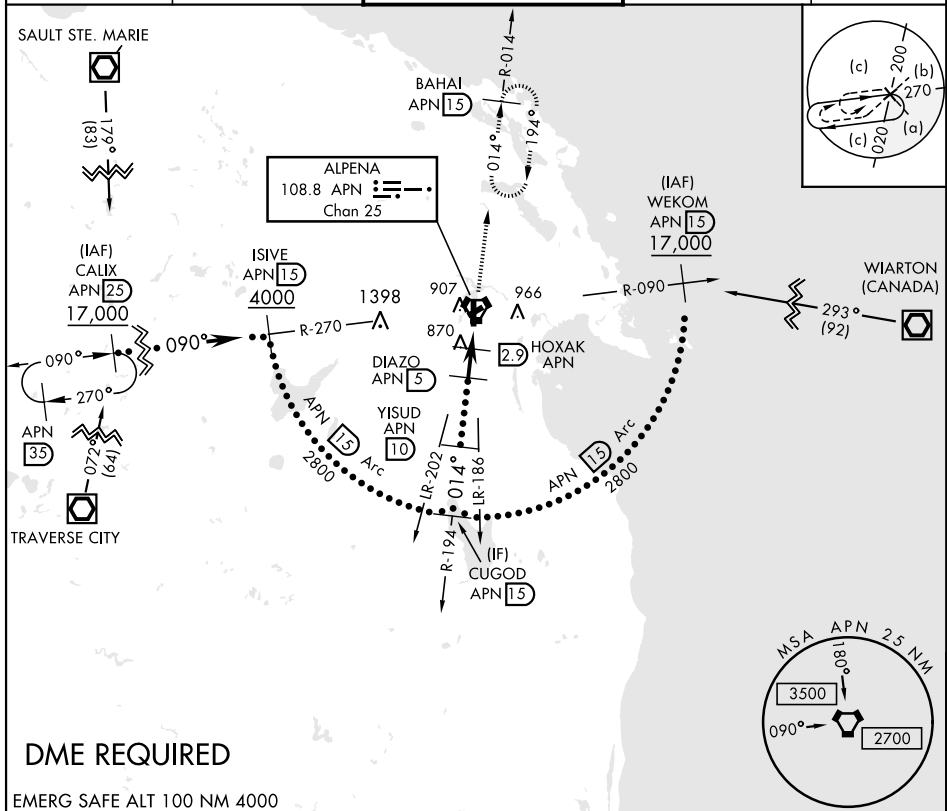
ALPENA, MICHIGAN

HI-VOR or TACAN RWY 1

VORTAC APN 108.8 Chan 25	APCH CRS 014°	Rwy ldg TDZE Arprt Elev 9001 685 690	JAL-718 [USAF]	ALPENA COUNTY RGNL (KAPN)
--	-------------------------	--	----------------	---------------------------

M * When ALS inop, increase vis to 1%. **MALSR** MISSED APPROACH: Climb to 5000 on APN R-014 to BAHAI 15 DME and hold, continue climb in hold to 5000.

ASOS 120.675	ALPENA APP CON 128.425 379.3	ALPENA TOWER ★ 121.35 (CTAF) 0 318.1	GND CON 121.9 275.8	UNICOM 122.95
------------------------	--	--	-------------------------------	-------------------------



DME REQUIRED
EMERG SAFE ALT 100 NM 4000

	CUGOD R-194 15	YISUD 10	DIAZO 5	HOXAK 2.9	WUJIM 1.6	VORTAC	ELEV 690	TDZE 685
	2800	2800	2000	1340			61 736	
			014°				715 719	
			3.14° TCH 52				737 767	
				2.1 NM	1.3 NM	5 NM	751	
CATEGORY	C	D	E					
S-1 *	1140-7/8	455	(500-7/8)					
CIRCLING	1220-1 1/2 530 (600-1 1/2)	1280-2 590 (600-2)	1320-2 1/4 630 (700-2 1/4)					

ALPENA, MICHIGAN 45° 05' N-83° 34' W ALPENA COUNTY RGNL (KAPN)

HI-VOR or TACAN RWY 1

EC-1, 25 FEB 2021 to 25 MAR 2021

EC-1, 25 FEB 2021 to 25 MAR 2021