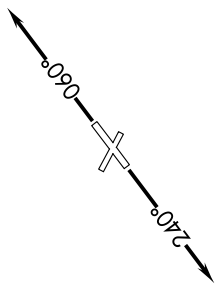
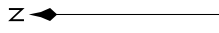


EC-1, 25 FEB 2021 to 25 MAR 2021

**TOP ALTITUDE:
ASSIGNED BY ATC**

ATIS
134.55
CLNC DEL
121.6
GND CON
121.6
ANN ARBOR TOWER ★
120.3 (CTAF)
DETROIT DEP CON
118.95 284.0



TAKEOFF MINIMUMS:
Rwys 6, 24: Standard.
Rwys 12, 30: NA-Environmental.

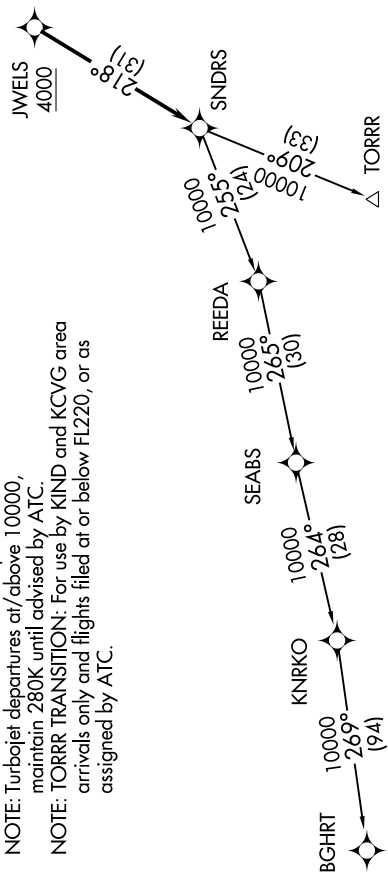
NOTE: Chart not to scale.

DEPARTURE ROUTE DESCRIPTION

TAKEOFF RUNWAY 6: Climb on heading 060° or as assigned for RADAR vectors to cross JWELS at or above 4000, thence....
TAKEOFF RUNWAY 24: Climb on heading 240° or as assigned for RADAR vectors to cross JWELS at or above 4000, thence....
....on track 218° to SNDRS, then on (transition). Maintain ATC assigned altitude, expect filed altitude 10 minutes after departure.

BGHR TRANSITION (SNDRS2.BGHR):
TORR TRANSITION (SNDRS2.TORR):

NOTE: RNAV 1.
NOTE: RADAR required.
NOTE: DME/DME/IRU or GPS required.
NOTE: Turbojet departures at/above 10000, maintain 280K until advised by ATC.
NOTE: TORR TRANSITION: For use by KIND and KCVG area arrivals only and flights filed at or below FL220, or as assigned by ATC.



EC-1, 25 FEB 2021 to 25 MAR 2021