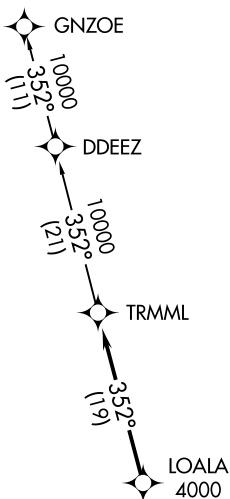
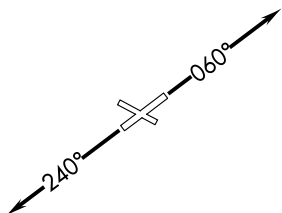


**TOP ALTITUDE:  
ASSIGNED BY ATC**



ATIS  
 134.55  
 CLNC DEL  
 121.6  
 GND CON  
 121.6  
 ANN ARBOR TOWER ★  
 120.3 (CTAF)  
 DETROIT DEP CON  
 118.95 284.0

**TAKEOFF MINIMUMS:**  
 Rwy 6, 24: Standard.  
 Rwy 12, 30: NA-Environmental.



NOTE: RNAV 1.  
 NOTE: RADAR required.  
 NOTE: DME/DME/IRU or GPS required.  
 NOTE: Turbojet departures at/above 10000,  
 maintain 280K until advised by ATC.

NOTE: Chart not to scale.



**DEPARTURE ROUTE DESCRIPTION**

TAKEOFF RUNWAY 6: Climb on heading 060° or as assigned for RADAR vectors to cross LOALA at or above 4000, thence....

TAKEOFF RUNWAY 24: Climb on heading 240° or as assigned for RADAR vectors to cross LOALA at or above 4000, thence....

....on track 352° to TRMML, then on (transition). Maintain ATC assigned altitude, expect filed altitude 10 minutes after departure.

GNZOE TRANSITION (TRMML3.GNZOE):