


WAAS CH 65925 W18A	APP CRS 179°	Rwy Idg TDZE Apt Elev	5001 275 279
--	------------------------	-----------------------------	---

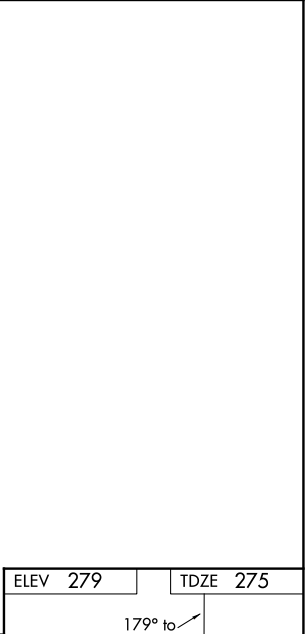
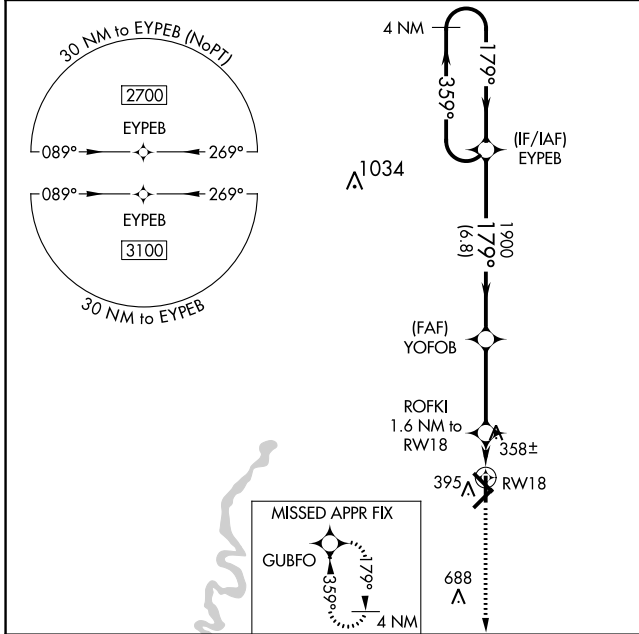
RNAV (GPS) RWY 18

WALNUT RIDGE RGNL (A.R.G)

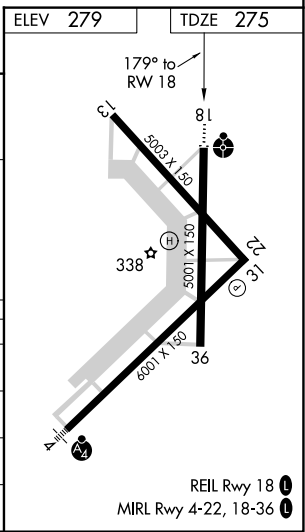
⚠ For uncompensated Baro-VNAV systems, LNAV/VNAV NA below -15°C (5°F) or above 42°C (107°F). DME/DME RNP-0.3 NA. When local altimeter setting not received, use Jonesboro altimeter setting and increase all DA 54 feet and all MDA 60 feet; increase LNAV/VNAV all Cats visibility ¼ mile and LNAV/VNAV Cat C and D visibility ⅓ mile. For inoperative ODALS, increase LPV all Cats and LNAV/VNAV all Cats visibility to ¾ mile and LNAV Cat C and D visibility to 1 mile. When using Jonesboro altimeter setting; for inoperative ODALS, increase LPV all Cats visibility to ⅔ mile, LNAV/VNAV all Cats visibility to 1 mile and LNAV Cat C and D visibility to 1 ⅓ mile. Baro-VNAV and VDP NA with Jonesboro altimeter setting.

ODALS  MISSED APPROACH: Climb to 3100 direct GUBFO and hold.

AWOS-3PT 135.925	MEMPHIS CENTER 120.075 289.4	UNICOM 122.8 (CTAF) 
----------------------------	--	---



4 NM Holding Pattern	EYEB	YOFOB	ROFKI 1.6 NM to RW18	3100	GUBFO
2700 ← 359°	179° →	179°	1900	*LNAV only.	
GP 3.00°			*820		
TCH 45			*1 NM to RW18		
			RW18		
	6.8 NM	3.4 NM	0.6	1 NM	



CATEGORY	A	B	C	D
LPV DA		475-¾	200 (200-¾)	
LNAV/VNAV DA		525-¾	250 (300-¾)	
LNAV MDA	620-¾	345 (400-¾)	620-⅞	345 (400-⅞)
CIRCLING	760-1	481 (500-1)	760-1½ 481 (500-1½)	840-2 561 (600-2)

SC-1, 25 FEB 2021 to 25 MAR 2021

SC-1, 25 FEB 2021 to 25 MAR 2021