

BLTWY SIX DEPARTURE (RNAV)

CTAF
122.7
HOUSTON CENTER
128.6 360.85

**TOP ALTITUDE:
ASSIGNED BY ATC**

NOTE: RADAR required.
NOTE: DME/DME/IRU or GPS required.
NOTE: RNAV 1.

TAKEOFF MINIMUMS

Rwy 14, 32: Standard with a minimum
climb of 500' per NM to 600.

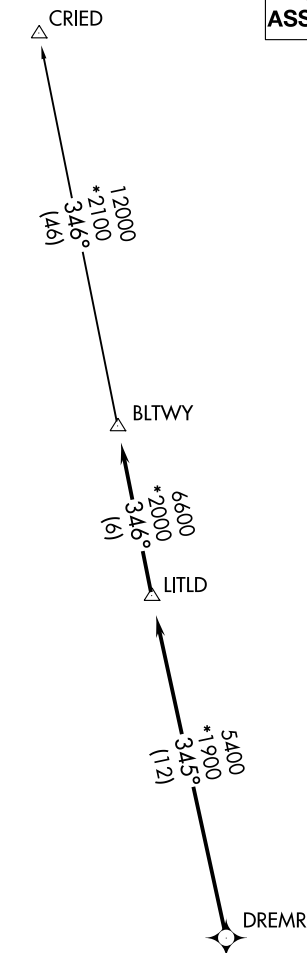
▼ DEPARTURE ROUTE DESCRIPTION

TAKEOFF RWY 14: Climb heading 148° or as assigned by ATC for RADAR vectors to DREMR, thence

TAKEOFF RWY 32: Climb heading 328° or as assigned by ATC for RADAR vectors to DREMR, thence

...on track 345° to LITLD, then on track 346° to BLTWY, then on (transition). Maintain ATC assigned altitude. Expect filed altitude 10 minutes after departure.

CRIED TRANSITION (BLTWY6.CRIED)



SC-5, 25 FEB 2021 to 25 MAR 2021

SC-5, 25 FEB 2021 to 25 MAR 2021

BLTWY SIX DEPARTURE (RNAV)

(BLTWY6.BLTWY) 25APR19