

(INDIE7.INDIE) 19227

AL-6032 (FAA)

WHARTON RGNL (A.R.M)

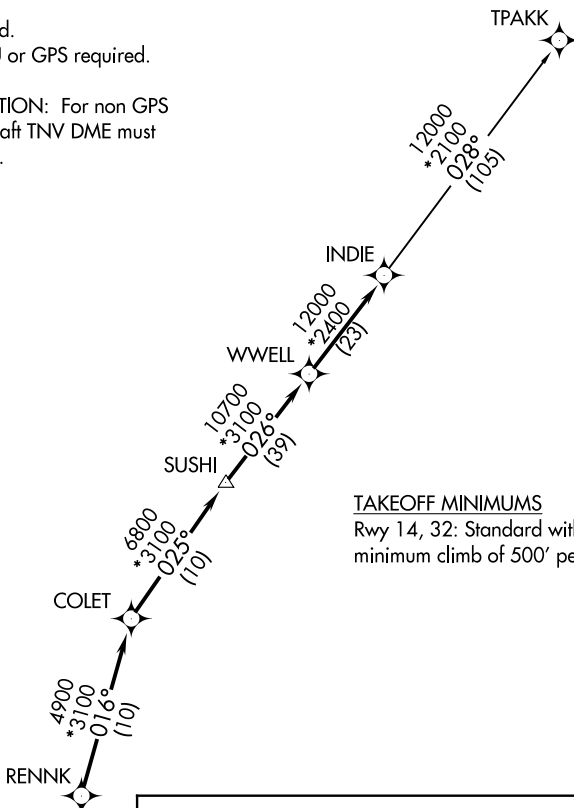
# INDIE SEVEN DEPARTURE (RNAV)

WHARTON, TEXAS

AWOS-3  
118.475  
CTAF  
122.7  
HOUSTON CENTER  
128.6 360.85

**TOP ALTITUDE:  
ASSIGNED BY ATC**

- NOTE: RADAR required.
- NOTE: DME/DME/IRU or GPS required.
- NOTE: RNAV 1.
- NOTE: TPAKK TRANSITION: For non GPS equipped aircraft TNV DME must be operational.



TAKEOFF MINIMUMS  
Rwy 14, 32: Standard with a minimum climb of 500' per NM to 600.

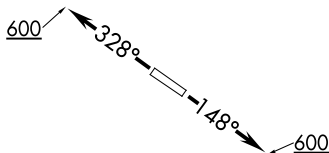
### DEPARTURE ROUTE DESCRIPTION

TAKEOFF RWY 14: Climb on heading 148° to 600 for RADAR vectors to RENNK, thence . . .

TAKEOFF RWY 32: Climb on heading 328° to 600 for RADAR vectors to RENNK, thence . . .

. . . . on track 016° to COLET, then on track 025° to SUSHI, then on track 026° to WWELL, then on track 026° to INDIE, then on (transition). Maintain ATC assigned altitude. Expect filed altitude 10 minutes after departure.

TPAKK TRANSITION (INDIE7.TPAKK)



NOTE: Chart not to scale.

SC-5, 25 FEB 2021 to 25 MAR 2021

SC-5, 25 FEB 2021 to 25 MAR 2021

# INDIE SEVEN DEPARTURE (RNAV)

WHARTON, TEXAS

(INDIE7.INDIE) 25APR19

WHARTON RGNL (A.R.M)