

STRYA SEVEN DEPARTURE (RNAV)

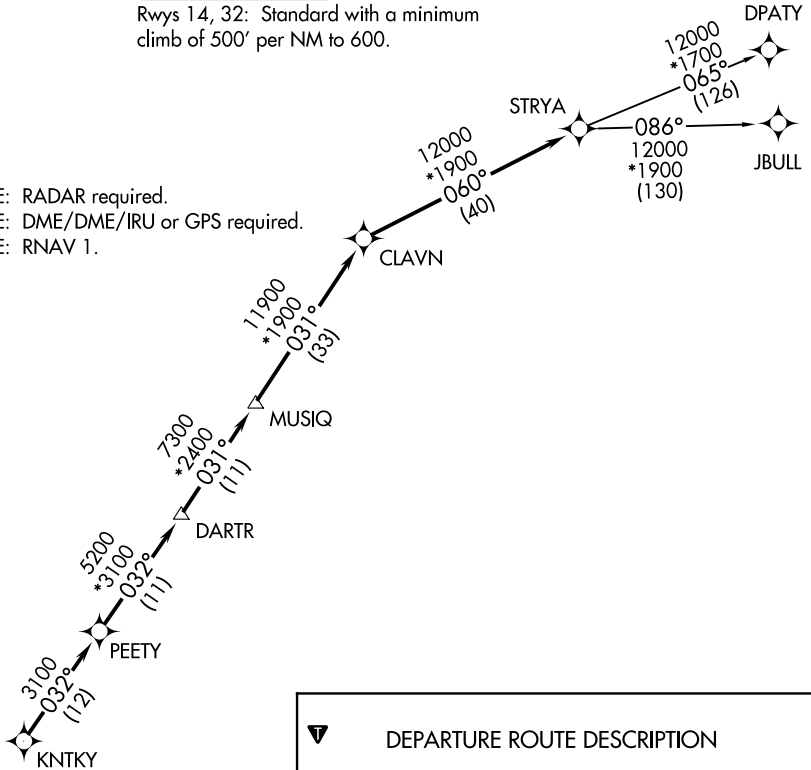
TOP ALTITUDE: ASSIGNED BY ATC

AWOS-3
118.475
CTAF
122.7
HOUSTON DEP CON
128.6 360.85

TAKEOFF MINIMUMS

Rwys 14, 32: Standard with a minimum climb of 500' per NM to 600.

- NOTE: RADAR required.
- NOTE: DME/DME/IRU or GPS required.
- NOTE: RNAV 1.



▼ DEPARTURE ROUTE DESCRIPTION

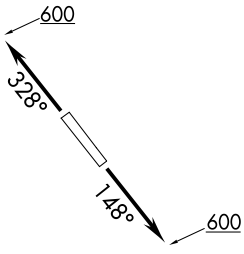
TAKEOFF RWY 14: Climb heading 148° to 600 for RADAR vectors to KNTKY, thence

TAKEOFF RWY 32: Climb heading 328° to 600 for RADAR vectors to KNTKY, thence

. . . . on track 032° to PEETY, then on track 032° to DARTR, then on track 031° to MUSIQ, then on track 031° to CLAVN, then on track 060° to STRYA, then on (transition). Maintain ATC assigned altitude. Expect filed altitude 10 minutes after departure.

DPATY TRANSITION (STRYA7.DPATY)

JBULL TRANSITION (STRYA7.JBULL)



NOTE: Chart not to scale.

SC-5, 25 FEB 2021 to 25 MAR 2021

SC-5, 25 FEB 2021 to 25 MAR 2021

STRYA SEVEN DEPARTURE (RNAV)