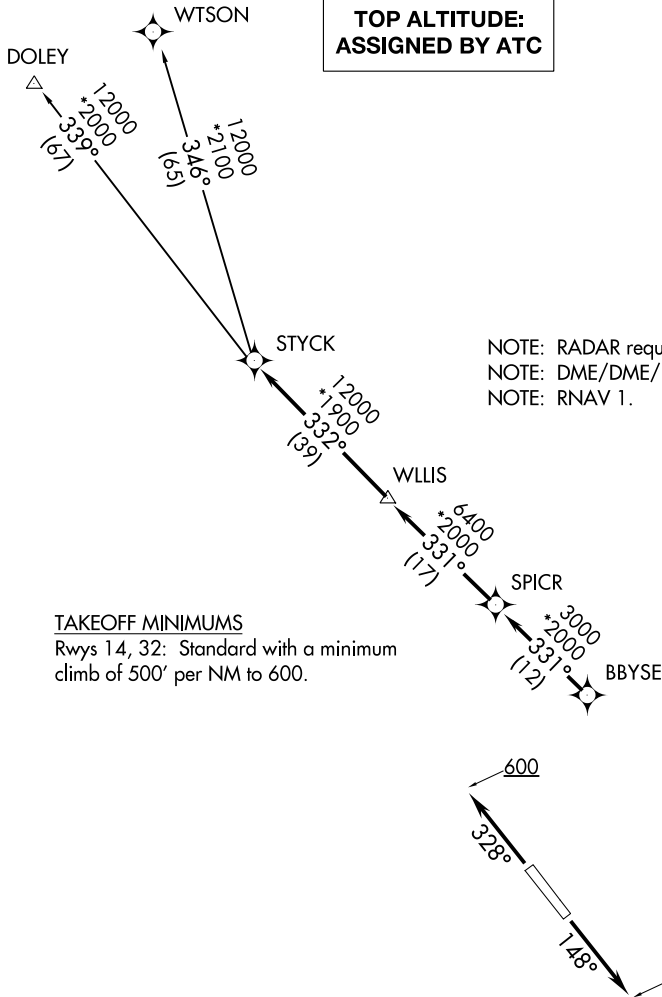


STYCK SEVEN DEPARTURE (RNAV)

WHARTON, TEXAS

**TOP ALTITUDE:
ASSIGNED BY ATC**

AWOS-3
118.475
CTAF
122.7
HOUSTON DEP CON
128.6 360.85



NOTE: RADAR required.
NOTE: DME/DME/IRU or GPS required.
NOTE: RNAV 1.

TAKEOFF MINIMUMS
Rwys 14, 32: Standard with a minimum
climb of 500' per NM to 600.

NOTE: Chart not to scale.



DEPARTURE ROUTE DESCRIPTION

TAKEOFF RWY 14: Climb heading 148° to 600 for RADAR vectors to BBYSE, thence. . . .

TAKEOFF RWY 32: Climb heading 328° to 600 for RADAR vectors to BBYSE, thence. . . .

. . . .on track 331° to SPICR, then on track 331° to WLLIS, then on track 332° to STYCK, then on
(transition). Maintain ATC assigned altitude. Expect filed altitude 10 minutes after departure.

DOLEY TRANSITION (STYCK7.DOLEY)

WTSON TRANSITION (STYCK7.WTSON)

STYCK SEVEN DEPARTURE (RNAV)