

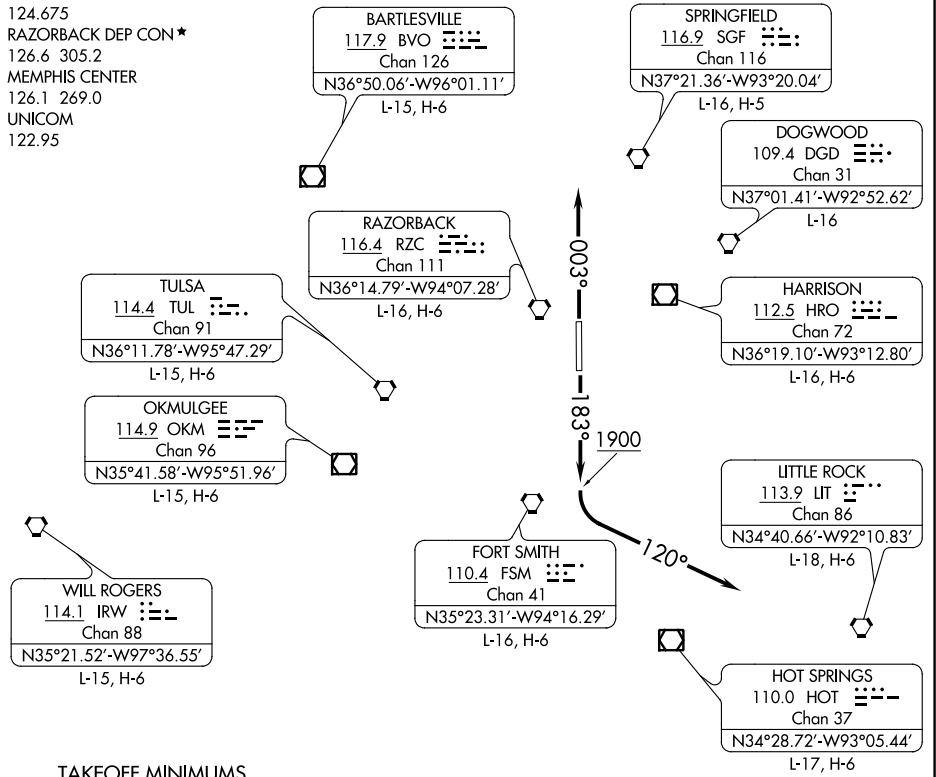
SPRING FIVE DEPARTURE

AL-5165 (FAA)

SPRINGDALE MUNI (ASG)
SPRINGDALE, ARKANSAS

GND CON
121.6
 SPRINGDALE TOWER ★
118.2 (CTAF)
 AWOS-3
124.675
 RAZORBACK DEP CON ★
126.6 305.2
 MEMPHIS CENTER
126.1 269.0
 UNICOM
122.95

**TOP ALTITUDE:
4000**



TAKEOFF MINIMUMS

Rwy 18: Standard.
 Rwy 36: 400-2½ or standard with minimum
 climb of 332' per NM to 1900.

NOTE: RADAR required.

NOTE: Chart not to scale.

SC-1, 25 FEB 2021 to 25 MAR 2021

SC-1, 25 FEB 2021 to 25 MAR 2021

DEPARTURE ROUTE DESCRIPTION

TAKEOFF RUNWAY 18: Climb on heading 183° to 1900, then turn left heading 120°, thence . . .

TAKEOFF RUNWAY 36: Climb on heading 003°, thence . . .

. . . Expect radar vectors to filed/assigned route. Climb and maintain 4000. Expect clearance to filed altitude/flight level ten minutes after departure.

LOST COMMUNICATIONS: If communications are not established within 2 minutes after departure, climb and maintain 5000' and proceed direct RZC VORTAC, then proceed on course.

SPRING FIVE DEPARTURE