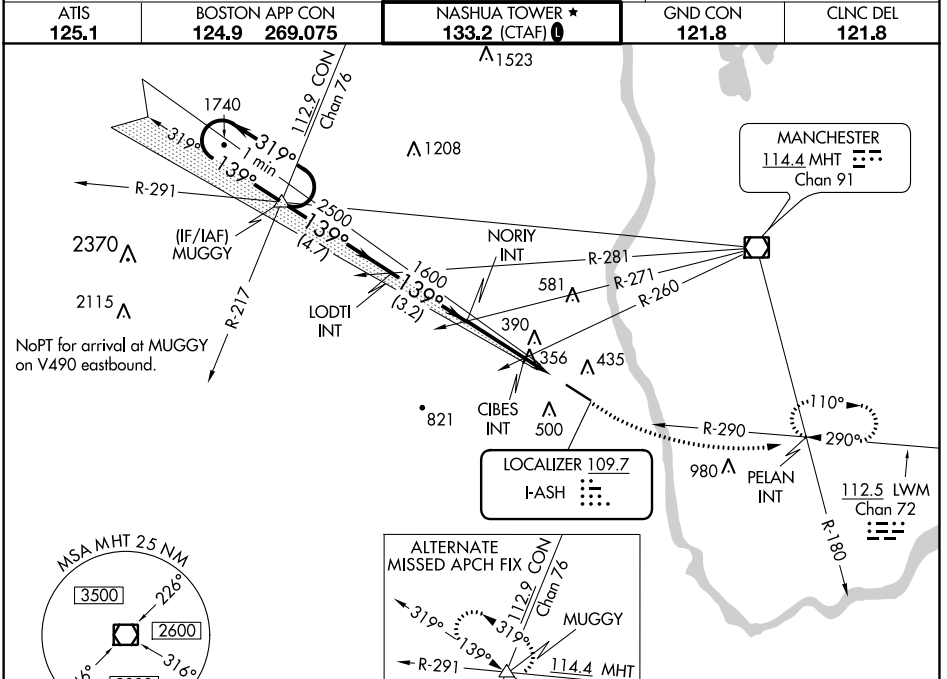


LOC I-ASH 109.7	APP CRS 139°	Rwy Idg TDZE Apt Elev	5650 200 200
---------------------------	------------------------	-----------------------------	---

ILS or LOC RWY 14

BOIRE FIELD (ASH)

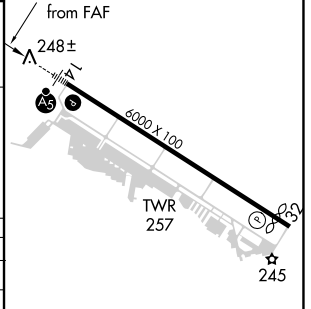
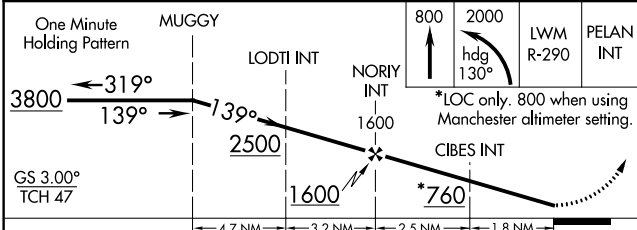
	When local altimeter setting not received, use Manchester altimeter: increase all DA to 432 feet; increase all MDA 40 feet and all S-LOC 14 Cat C/D visibilities ½ SM and all Circling Cat D visibilities ¼ SM. For inoperative ALS when using Manchester altimeter setting, increase CIBES fix minimums S-LOC 14 Cat C/D visibility to 1 ½ SM.	MALSR 	MISSED APPROACH: Climb to 800 then climbing left turn to 2000 on heading 130° and LWM VOR/DME R-290 to PELAN INT and hold.
	ATIS 125.1 BOSTON APP CON 124.9 269.075 NASHUA TOWER ★ 133.2 (CTAF) 1 GND CON 121.8 CLNC DEL 121.8		



NE-1, 25 FEB 2021 to 25 MAR 2021

NE-1, 25 FEB 2021 to 25 MAR 2021

ELEV 200	D TDZE 200
----------	-------------------



CATEGORY	A	B	C	D
S-ILS 14	400-½ 200 (200-½)			
S-LOC 14	760-½	560 (600-½)	760-1 ⅛	560 (600-1 ⅛)
C CIRCLING	820-1 620 (700-1)	840-1 640 (700-1)	900-2 700 (700-2)	1000-2 ½ 800 (800-2 ½)
CIBES FIX MINIMUMS (DUAL VOR RECEIVERS REQUIRED)				
S-LOC 14	660-½	460 (500-½)	660-7 ⅛	460 (500-7 ⅛)
C CIRCLING	820-1 620 (700-1)	840-1 640 (700-1)	900-2 700 (700-2)	1000-2 ½ 800 (800-2 ½)

HIRL Rwy 14-32 1	REIL Rwy 32 1
FAF to MAP 4.3 NM	
Knots	60 90 120 150 180
Min:Sec	4:18 2:52 2:09 1:43 1:26