


WAAS CH 97730 W14A	APP CRS 139°	Rwy Idg TDZE 200 Apt Elev 200	5650
--	------------------------	---	-------------


RNAV (GPS) RWY 14

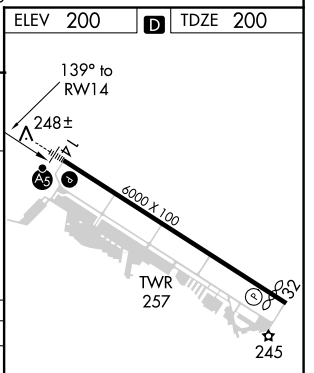
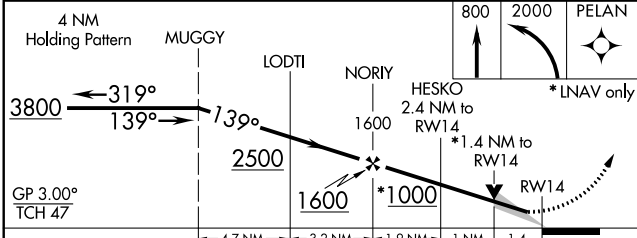
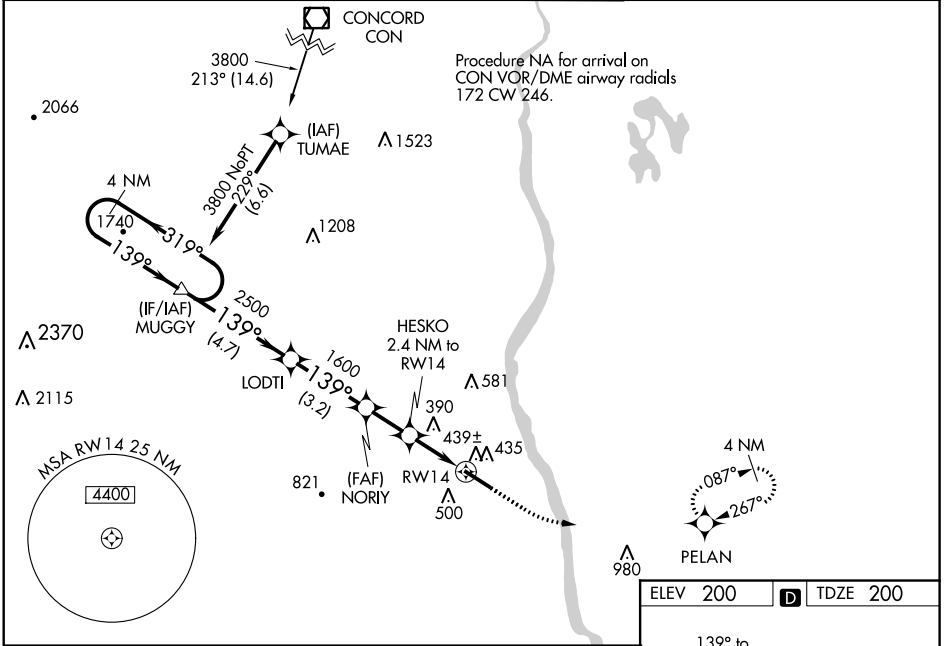
BOIRE FIELD (ASH)

⚠ For uncompensated Baro-VNAV systems, LNAV/VNAV NA below -15°C (5°F) or above 54°C (130°F). DME/DME RNP-0.3 NA. When local altimeter setting not received, use Manchester altimeter setting: increase LPV all Cats DA to 432 feet, LNAV/VNAV all Cats DA to 652 feet and LNAV/VNAV all Cats visibility 1/2 mile; increase all MDA 40 feet and Circling Cat D visibility 1/4 mile. Baro-VNAV and VDP NA when using Manchester altimeter setting. For inop MALSR, increase LNAV/VNAV all Cats and LNAV Cat C/D visibility to 1 3/8 mile. For inop MALSR when using Manchester altimeter setting, increase LNAV/VNAV all Cats visibility to 1 1/2 mile.


MALSR 


MISSED APPROACH:
Climb to 800 then climbing left turn to 2000 direct PELAN and hold.

ATIS 125.1	BOSTON APP CON 124.9 269.075	NASHUA TOWER * 133.2 (CTAF) 	GND CON 121.8	CLNC DEL 121.8
----------------------	--	---	-------------------------	--------------------------



CATEGORY	A	B	C	D
LPV DA		400-1/2	200 (200-1/2)	
LNAV/VNAV DA		620-1	420 (500-1)	
LNAV MDA	700-1/2	500 (500-1/2)	700-1	500 (500-1)
C CIRCLING	820-1 620 (700-1)	840-1 640 (700-1)	900-2 700 (700-2)	1000-2 1/2 800 (800-2 1/2)

HIRL Rwy 14-32 

REIL Rwy 32 

NE-1, 25 FEB 2021 to 25 MAR 2021

NE-1, 25 FEB 2021 to 25 MAR 2021