

WAAS CH <b>73030</b> <b>W32A</b>	APP CRS <b>319°</b>	Rwy ldg TDZE Apt Elev	<b>5650</b> <b>193</b> <b>200</b>
--	------------------------	-----------------------------	---

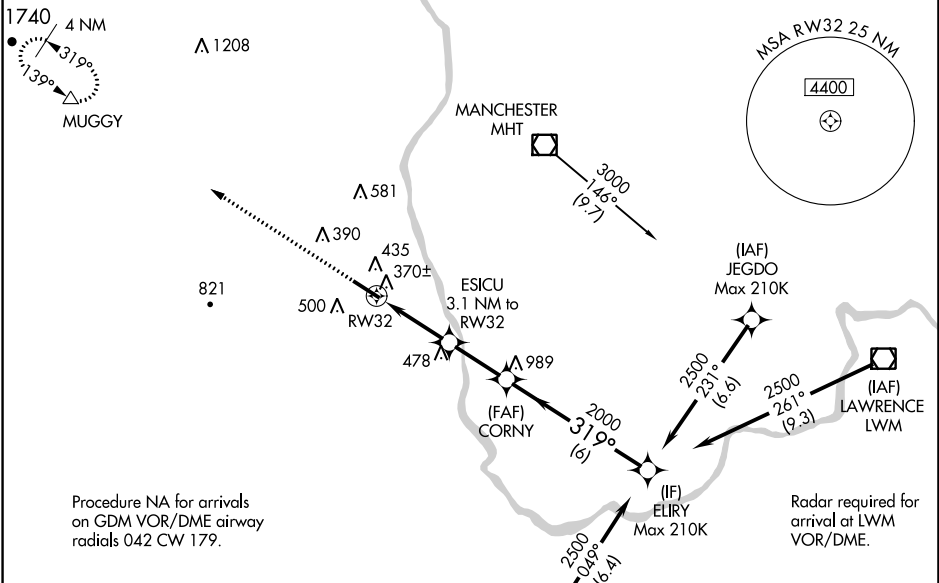
# RNAV (GPS) RWY 32

BOIRE FIELD (ASH)

**⚠** Baro-VNAV and VDP NA with Manchester altimeter setting. For uncompensated Baro-VNAV systems, LNAV/VNAV NA below -1.5°C (5°F) or above 54°C (130°F). When local altimeter setting not received, use Manchester altimeter setting: increase LPV all Cats DA to 513 feet, LNAV/VNAV all Cats DA to 666 feet and all visibilities 1/8 mile; increase all MDA 40 feet and increase LNAV Cat C/D visibility 1/8 mile and Circling Cat D 1/4 mile. DME/DME RNP-0.3 NA. Helicopter visibility reduction below 3/4 SM NA.

**MISSED APPROACH:**  
Climb to 3800 direct MUGGY INT and hold, continue climb-in-hold to 3800.

ATIS <b>125.1</b>	BOSTON APP CON <b>124.9 269,075</b>	NASHUA TOWER ★ <b>133.2 (CTAF)</b> <b>0</b>	GND CON <b>121.8</b>	CLNC DEL <b>121.8</b>
----------------------	--	--	-------------------------	--------------------------

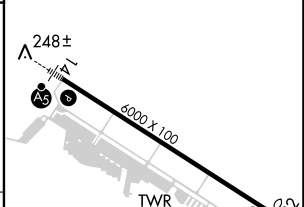
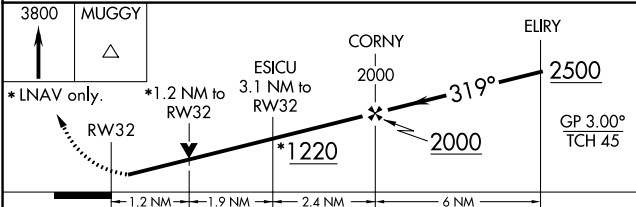


Procedure NA for arrivals on GDM VOR/DME airway radials 042 CW 179.

Radar required for arrival at LWM VOR/DME.



ELEV 200	<b>D</b> TDZE 193
----------	-------------------



CATEGORY	A	B	C	D
LPV DA	481-1 288 (300-1)			
LNAV/VNAV DA	634-1½ 441 (500-1½)			
LNAV MDA	620-1 427 (500-1)	620-1¼ 427 (500-1¼)		
<b>C</b> CIRCLING	820-1¾ 620 (700-1)	840-1¾ 640 (700-1)	900-2 700 (700-2)	1000-2½ 800 (800-2½)

HIRL Rwy 14-32 **0**  
REIL Rwy 32 **0**

NE-1, 25 FEB 2021 to 25 MAR 2021

NE-1, 25 FEB 2021 to 25 MAR 2021