

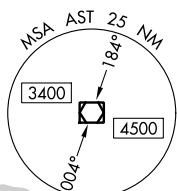
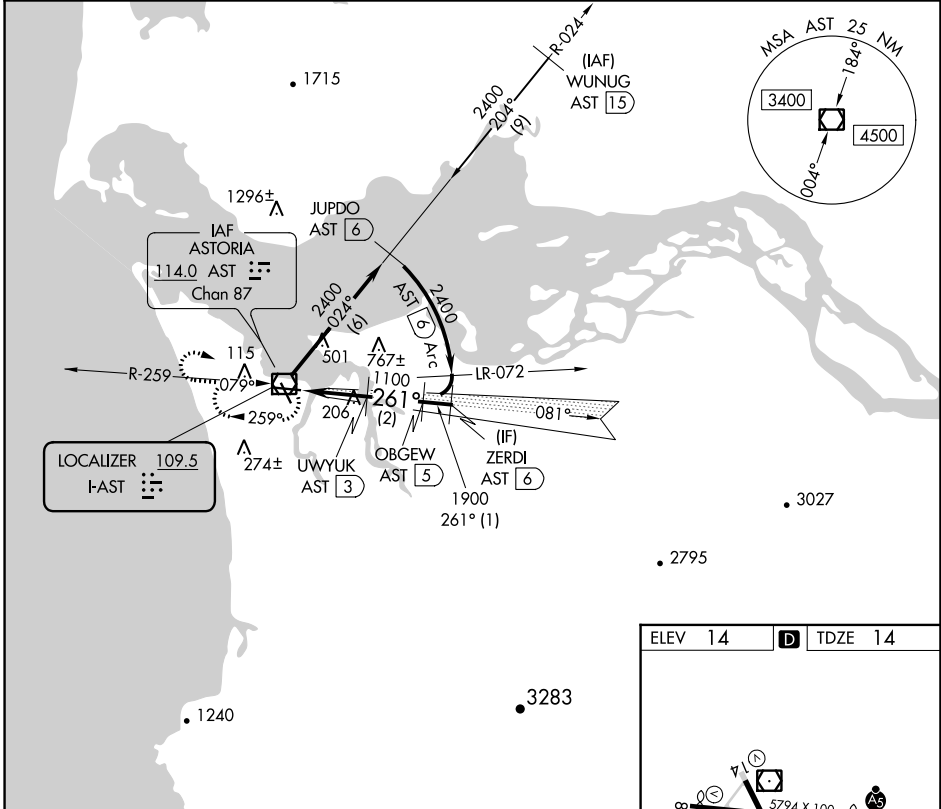
LOC I-AST <b>109.5</b>	APP CRS <b>261°</b>	Rwy ldg TDZE Elev <b>4780</b> <b>14</b> <b>14</b>
---------------------------	------------------------	--

# COPTER LOC RWY 26

ASTORIA RGNL (AST)

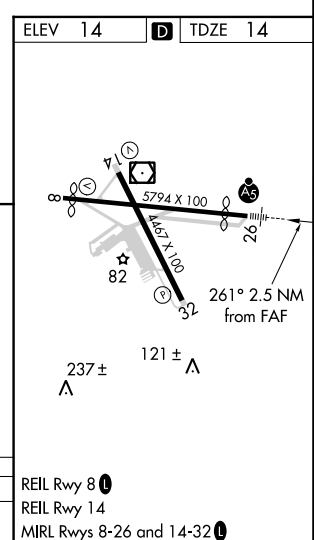
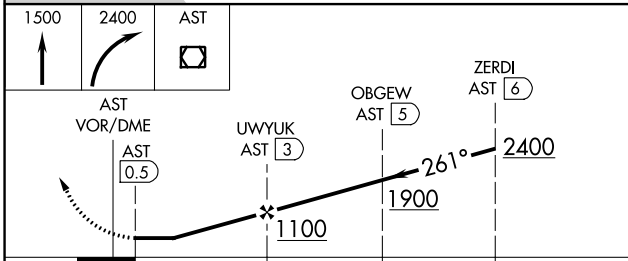
DME required.	MALSR	MISSED APPROACH: Climb to 1500 then climbing right turn to 2400 direct AST VOR/DME and hold.
<p>▼ DME from AST VOR/DME. Simultaneous reception of I-AST and AST DME required. For inop ALS increase visibility to 1 SM.</p> <p>▲ NA</p>		

ASOS <b>135.375</b>	SEATTLE CENTER <b>124.2 317.6</b>	UNICOM <b>122.8 (CTAF) 0</b>
------------------------	--------------------------------------	---------------------------------



NW-1, 25 FEB 2021 to 25 MAR 2021

NW-1, 25 FEB 2021 to 25 MAR 2021



CATEGORY	COPTER		REIL Rwy 8 0
H-LOC 26	460-3/4	446 (500-3/4)	REIL Rwy 14
			MIRL Rwy 8-26 and 14-32 0