

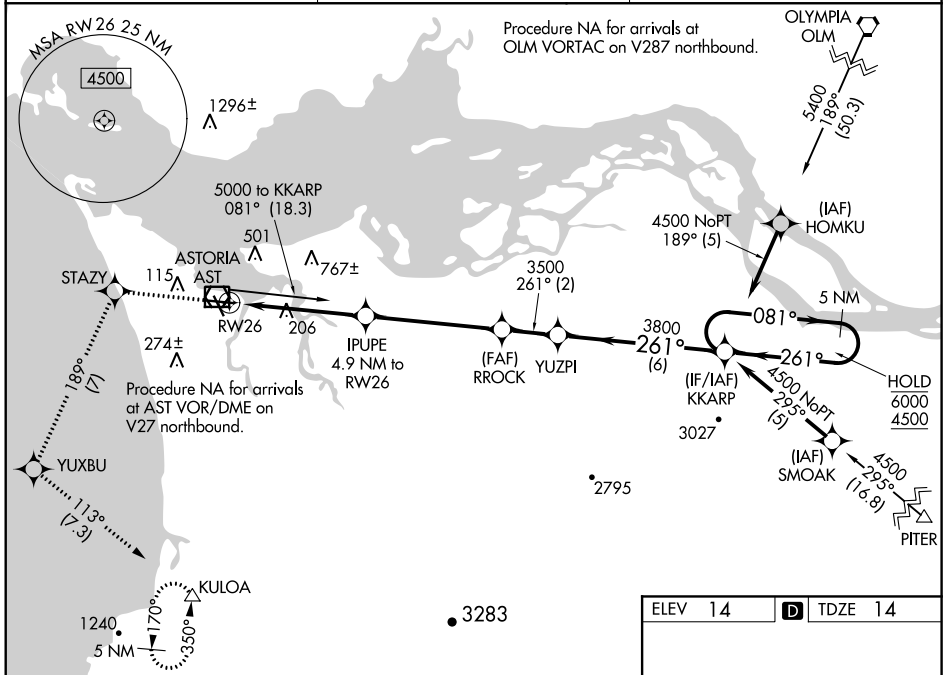
WAAS CH 97711 W26A	APP CRS 261°	Rwy Idg TDZE 14 Apt Elev 14	4780
--	------------------------	---	-------------

RNAV (GPS) RWY 26

ASTORIA RGNL (AST)

RNP APCH.	MALSR	MISSED APPROACH: (Do not exceed 210K until STAZY) Climb to 5000 direct STAZY and left turn on track 189° to YUXBU and left turn on track 113° to KULOA and hold, continue climb-in-hold to 5000.
<p>⚠ Inop table does not apply to LPV all Cats. Rwy 26 helicopter visibility reduction below ¾ SM NA. For inop ALS, increase LNAV Cat A/B visibility to 1 SM and Cat C/D to 2 ½ SM.</p>		

ASOS 135.375	SEATTLE CENTER 124.2 317.6	UNICOM 122.8 (CTAF)
------------------------	--------------------------------------	-------------------------------



NW-1, 25 FEB 2021 to 25 MAR 2021

NW-1, 25 FEB 2021 to 25 MAR 2021

5000	STAZY	YUXBU	KULOA	KKARP	5 NM Holding Pattern
		tr 189°			
*LNAV only					
IPUPE 4.9 NM to RW26		RROCK 3500	YUZPI 3500	6000 / 4500	
2.3 NM to RW26		1780		GP 3.30° TCH 55	
2.3 NM		2.6 NM	4.9 NM	2 NM	6 NM
CATEGORY	A	B	C	D	
LPV DA	264-¾		250 (300-¾)		
LNAV MDA	860-¾	846 (900-¾)	860-1⅞	846 (900-1⅞)	
C CIRCLING	860-1¼	846 (900-1¼)	1080-3	1160-3	
			1066 (1100-3)	1146 (1200-3)	

ELEV 14	D TDZE 14
---------	------------------