

APP CRS	Rwy Idg	3800
048°	TDZE	280
	Apt Elev	280

RNAV (GPS) RWY 5

HALL-MILLER MUNI (ATA)

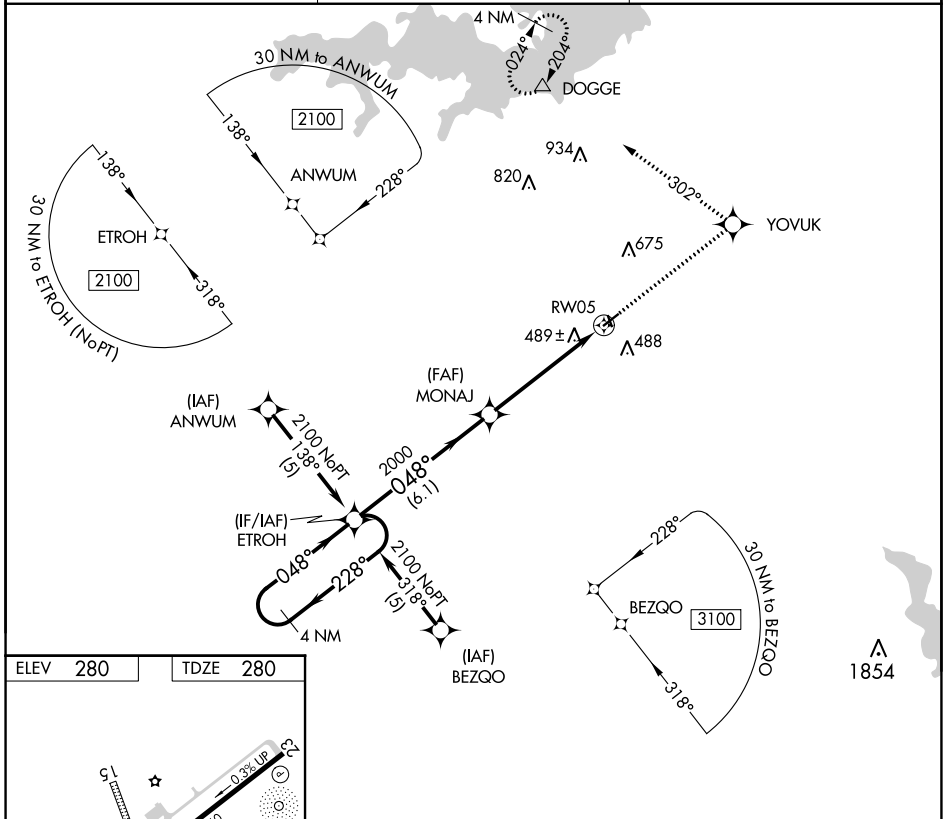
RNP APCH.

▼ Rwy 5 helicopter visibility reduction below 3/4 SM NA. Use Texarkana altimeter setting, when not received use Mount Pleasant altimeter setting and increase all MDA 40 feet.

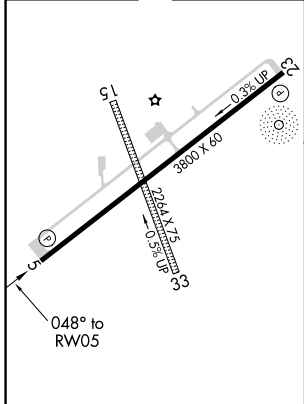
▲ NA

MISSED APPROACH: Climb to 3000 direct YOYUK and left turn via 302° track to DOGGE and hold.

TXK ASOS	FORT WORTH CENTER	CTAF
120.2	123.925 269.475	122.9 0



ELEV	280	TDZE	280
------	-----	------	-----



MIRL Rwy 5-23 **0**
REIL Rwy 5 and 23 **0**

4 NM Holding Pattern	ETROH	3000	YOYUK	DOGGE
		↑	◆	△
			302° tr	
2100	← 228°	048° →	MONAJ	RW05
			2000	
			3.05° TCH 45	
			6.1 NM	5.2 NM
CATEGORY	A	B	C	D
LNAV MDA	860-1	580 (600-1)	NA	

SC-2, 25 FEB 2021 to 25 MAR 2021

SC-2, 25 FEB 2021 to 25 MAR 2021