

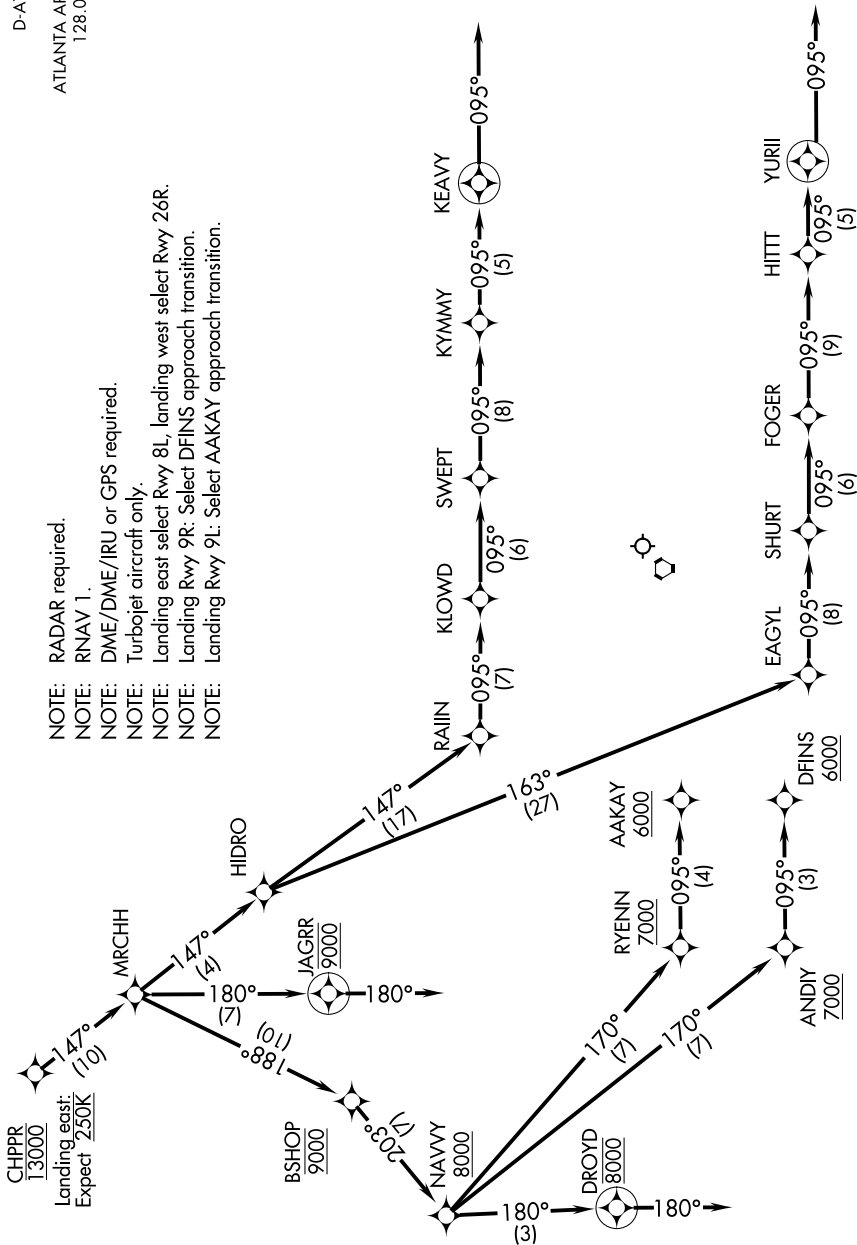
CHPPR ONE ARRIVAL (RNAV) Arrival Routes

SE-4, 25 FEB 2021 to 25 MAR 2021

D-ATIS ARR  
119.65  
ATLANTA APP CON  
128.0 379.9



- NOTE: RADAR required.
- NOTE: RNAV 1.
- NOTE: DME/DME/IRU or GPS required.
- NOTE: Turbojet aircraft only.
- NOTE: Landing east select Rwy 8L, landing west select Rwy 26R.
- NOTE: Landing Rwy 9R: Select DFINS approach transition.
- NOTE: Landing Rwy 9L: Select AAKAY approach transition.



(NARRATIVE ON FOLLOWING PAGE)

NOTE: Chart not to scale.

SE-4, 25 FEB 2021 to 25 MAR 2021

CHPPR ONE ARRIVAL (RNAV) Arrival Routes