

GNDLF TWO ARRIVAL(RNAV) Arrival Routes

SE-4, 25 FEB 2021 to 25 MAR 2021

ARRIVAL ROUTE DESCRIPTION

- BEORN TRANSITION (BEORN.GNDLF2):
- COOUP TRANSITION (COOUP.GNDLF2): Assigned by ATC only.
- DRSDN TRANSITION (DRSDN.GNDLF2):
- ENNTT TRANSITION (ENNTT.GNDLF2):
- FRDDO TRANSITION (FRDDO.GNDLF2):
- GOLLM TRANSITION (GOLLM.GNDLF2):
- KHYMA TRANSITION (KHYMA.GNDLF2): Assigned by ATC only.
- ORRKK TRANSITION (ORRKK.GNDLF2):
- SHYRE TRANSITION (SHYRE.GNDLF2):
- STRDR TRANSITION (STRDR.GNDLF2):

From GNDLF on track 059° to cross HALRR at or above 10000 and at 250K, then on track 059° to cross SHULR at 8000, then on track 036° to JNGLE, then on track 005° to QUBIT, then on track 005°. Expect RADAR vectors to find approach course.

LOST COMMUNICATIONS:

- ASSIGNED RWY 10 or NOT ASSIGNED: Cross HALRR at or above 10000; cross SHULR at 8000; cross QUBIT at 5000; after QUBIT descend to 3000 and proceed direct DEWHY; proceed on the ILS or RNAV Rwy 10 approach.
- ASSIGNED RWY 9L: Cross HALRR at or above 10000; cross SHULR at 8000; cross QUBIT at 6000; after QUBIT proceed direct RYENN and proceed on the ILS or RNAV Rwy 9L approach.
- ASSIGNED RWY 9R: Cross HALRR at or above 10000; cross SHULR at 8000; cross QUBIT at 6000; after QUBIT proceed direct ANDYI and proceed on the ILS or RNAV Rwy 9R approach.
- ASSIGNED RWY 8L: Cross HALRR at or above 10000; cross SHULR at 8000; cross QUBIT at 6000; after QUBIT proceed direct LARIL and proceed on the ILS or RNAV Rwy 8L approach.
- ASSIGNED RWY 8R: Cross HALRR at or above 10000; cross SHULR at 8000; cross QUBIT at 6000; after QUBIT proceed direct GPEAT and proceed on the ILS or RNAV Rwy 8R approach.

NOTE: RADAR required.

NOTE: RNAV 1.

NOTE: DME/DME/IRU or GPS required.

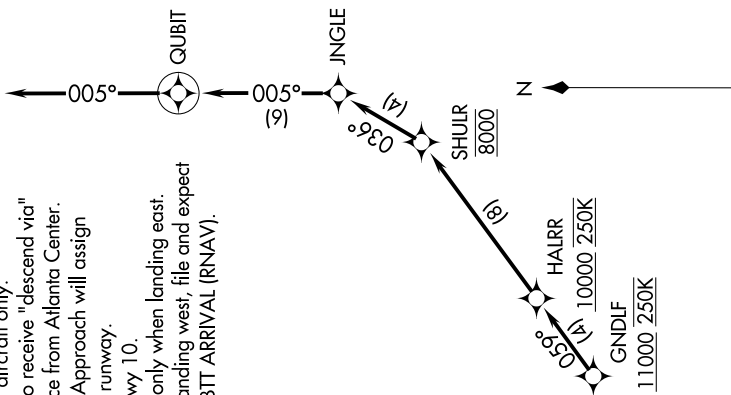
NOTE: Turbojet aircraft only.

NOTE: Expect to receive "descend via" clearance from Atlanta Center. Atlanta Approach will assign landing runway.

NOTE: Select Rwy 10.

NOTE: For use only when landing east. When landing west, file and expect the HOBTT ARRIVAL (RNAV).

D-ATIS ARR
119.65
ATLANTA APP CON
127.9 379.9



NOTE: Chart not to scale.

SE-4, 25 FEB 2021 to 25 MAR 2021