

NOTE: If unable to accept climb rate, advise Clearance Delivery on initial contact.

NOTE: Use departure frequency depicted unless otherwise advised.

NOTE: For Turbojet aircraft only.

NOTE: DME/DME/IRU or GPS Required.

NOTE: RNAV 1.

NOTE: RADAR Required for non-GPS equipped aircraft.

NOTE: Transponder code will be issued via PDC or Atlanta Clearance Delivery.

NOTE: Accelerate to 250K, if unable, advise both tower and Departure Control on initial contact.

NOTE: Aircraft at Midfield Ramps will advise Ramp Towers of departure SID prior to pushback. Upon receipt of ATC clearance (from ATL Clearance Delivery), read back only your call sign and transponder code, unless you have a question.

D-ATIS 125.55

CLNC DEL 118.1

CPDLC

GND CON

121.9 254.4 (Rwys 8L-26R, 8R-26L)

121.75 254.4 (Rwys 9L-27R, 9R-27L)

121.65 254.4 (Rwy 10-28)

ATLANTA TOWER

119.1 254.4 (Rwy 8L-26R)

125.325 254.4 (Rwy 8R-26L)

119.3 254.4 (Rwy 9R-27L)

123.85 254.4 (Rwy 9L-27R)

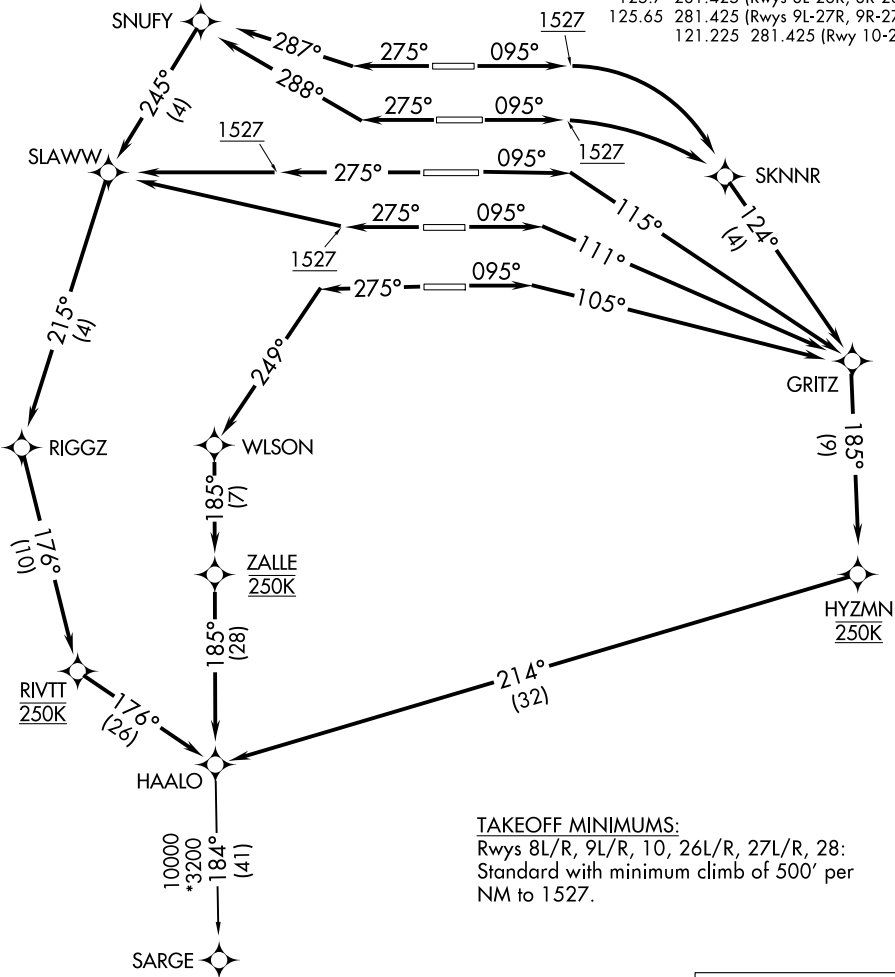
119.5 254.4 (Rwy 10-28)

ATLANTA DEP CON

125.7 281.425 (Rwys 8L-26R, 8R-26L)

125.65 281.425 (Rwys 9L-27R, 9R-27L)

121.225 281.425 (Rwy 10-28)



SE-4, 25 FEB 2021 to 25 MAR 2021

SE-4, 25 FEB 2021 to 25 MAR 2021

NOTE: Chart not to scale.

(NARRATIVE ON FOLLOWING PAGE)

**TOP ALTITUDE:  
10000**