

LOC/DME I-OMO 111.55 Chan 52 (Y)	APP CRS 095°	Rwy ldg 9000 TDZE 1000 Apt Elev 1026
--	------------------------	---

ILS RWY 10 (CAT II & III)

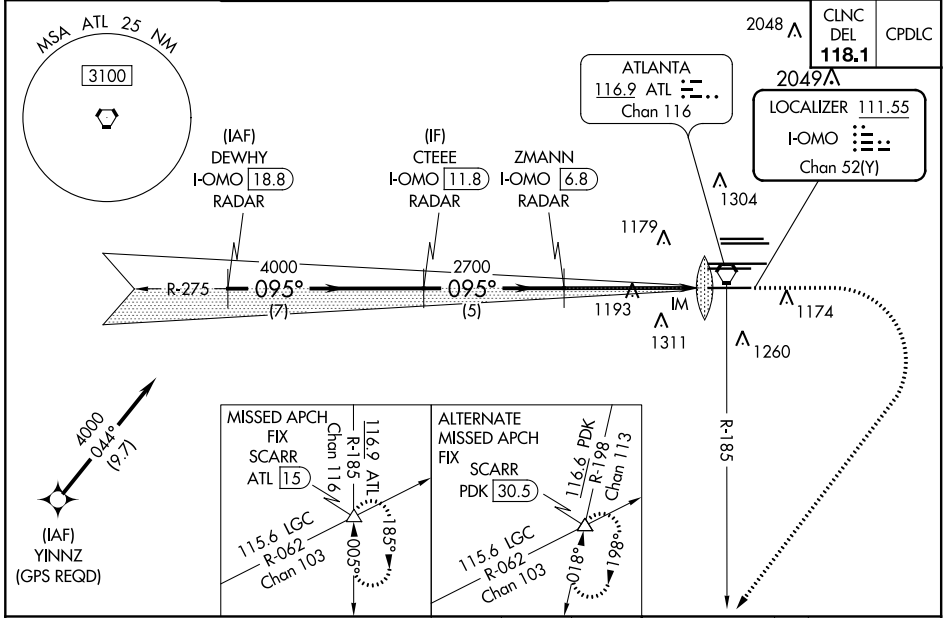
HARTSFIELD-JACKSON ATLANTA INTL (ATL)

Simultaneous approach authorized with Rwy 9L or 8R or 8L, or Rwys 9L and 8L. DME or Radar required. Localizer not suitable for electronic rollout guidance.

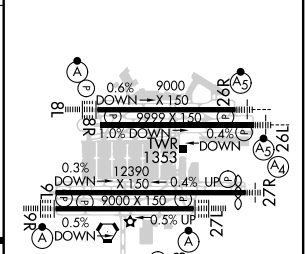
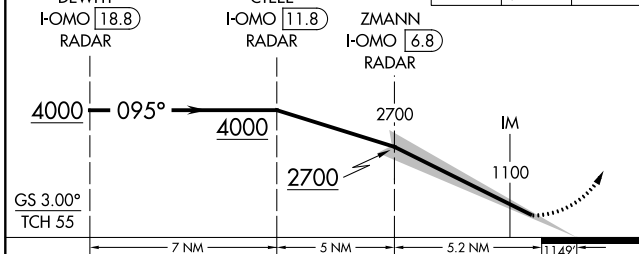
ALSF-2

MISSED APPROACH: Climb to 1400 then climbing right turn to 3000 on ATL VORTAC R-185 to SCARR INT/ATL 15 DME and hold.

D-ATIS ARR 119.65	ATLANTA APP CON 127.9 379.9	ATLANTA TOWER 8L-26R 8R-26L 9L-27R 9R-27L 10-28 RWYS 119.1 125.325 123.85 119.3 119.5 254.4	ALL RWYS 121.9	GND CON (8L-26R,8R-26L) (9L-27R,9R-27L) 10-28 RWYS 121.75 121.65 254.4
-----------------------------	--	--	-----------------------------	---



1400	3000	SCARR	ELEV 1026	TDZE 1000
------	------	-------	------------------	------------------



CATEGORY	A	B	C	D
S-ILS 10	CAT II RA 180/12		100 DA 1100	
S-ILS 10	CAT IIIa		RVR 07	
S-ILS 10	CAT IIIb		NA	
S-ILS 10	CAT IIIc		NA	

CATEGORY II & III ILS - SPECIAL AIRCREW & AIRCRAFT CERTIFICATION REQUIRED

HIRL all Rwys
TDZ/CL R.wys 8L,
9R, 10, 26R, 27L and 28

SE-4, 25 FEB 2021 to 25 MAR 2021

SE-4, 25 FEB 2021 to 25 MAR 2021