

|   |                        |                             |  |
|---|------------------------|-----------------------------|--|
| LOC/DME I-GXZ<br><b>110.1</b><br>Chan <b>38</b> | APP CRS<br><b>275°</b> | Rwy ldg<br>TDZE<br>Apt Elev | <b>8500</b><br><b>990</b><br><b>1026</b> |
|---|------------------------|-----------------------------|--|

# ILS RWY 26R (SA CAT I & II)

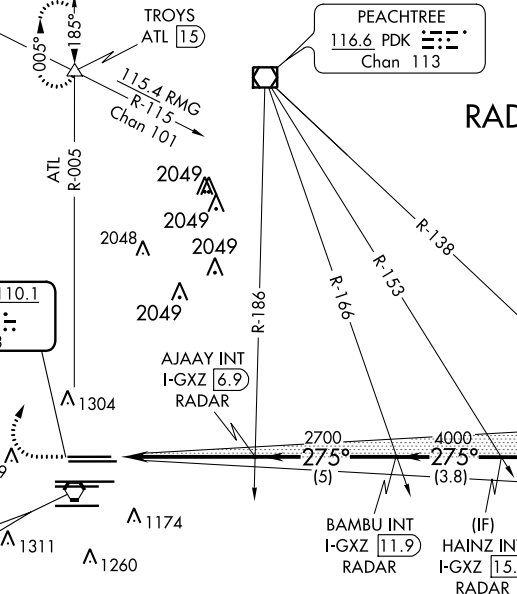
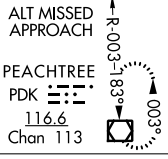
HARTSFIELD-JACKSON ATLANTA INTL (ATL)

▼ SA CAT I: Requires specific OPSPEC, MSPEC, or LOA approval and use of HUD to DH.  
SA CAT II: Reduced lighting: Requires specific OPSPEC, MSPEC, or LOA approval and use of autoland or HUD to touchdown.  
Simultaneous approach authorized with Rwy 27R or 27L or 28, or Rwy 27R and 28.



MISSED APPROACH: Climb to 1400 then climbing right turn to 3500 on ATL VORTAC R-005 to TROYS INT/ATL 15 DME and hold.

|                             |  |   |  |                             |  |
|-----------------------------|--|---|--|-----------------------------|--|
| D-ATIS<br>ARR <b>119.65</b> | ATLANTA<br>APP CON<br>DEP <b>127.9 379.9</b> | ATLANTA TOWER<br>8L-26R 8R-26L 9L-27R 9R-27L 10-28 RWYS | ALL<br>RWYS (8L-26R, 8R-26L) (9L-27R, 9R-27L) 10-28 RWYS | GND CON<br>DEP <b>121.9</b> | ALL<br>RWYS <b>121.75 121.65 254.4</b> |
|-----------------------------|--|---|--|-----------------------------|--|



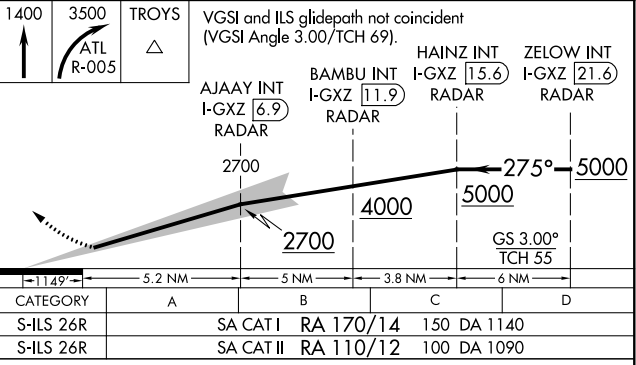
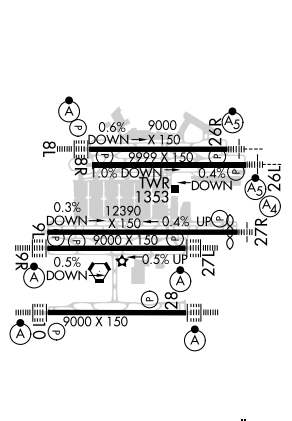
|              |       |
|--------------|-------|
| CLNC DEL     | CPDLC |
| <b>118.1</b> |       |

**RADAR REQUIRED**

SE-4, 25 FEB 2021 to 25 MAR 2021

SE-4, 25 FEB 2021 to 25 MAR 2021

|           |          |          |
|-----------|----------|----------|
| ELEV 1026 | <b>D</b> | TDZE 990 |
|-----------|----------|----------|



**SA CATEGORY I & II ILS - SPECIAL AIRCREW & AIRCRAFT CERTIFICATION REQUIRED**