

LOC/DME I-PKU 111.75	APP CRS 275°	Rwy Idg 9000
Chan 54 (Y)		TDZE 998
		Apt Elev 1026

ILS RWY 28 (SA CAT I)
HARTSFIELD-JACKSON ATLANTA INTL (ATL)

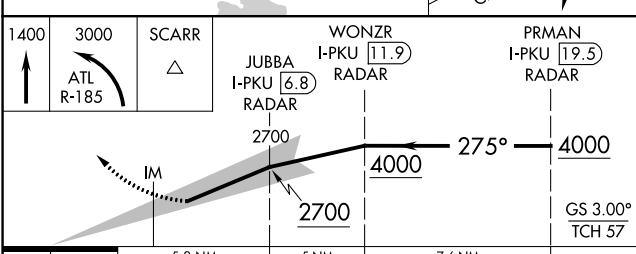
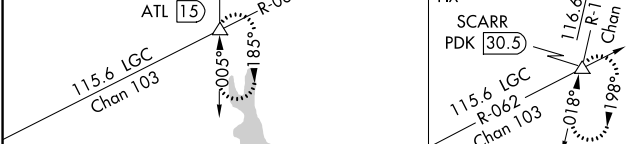
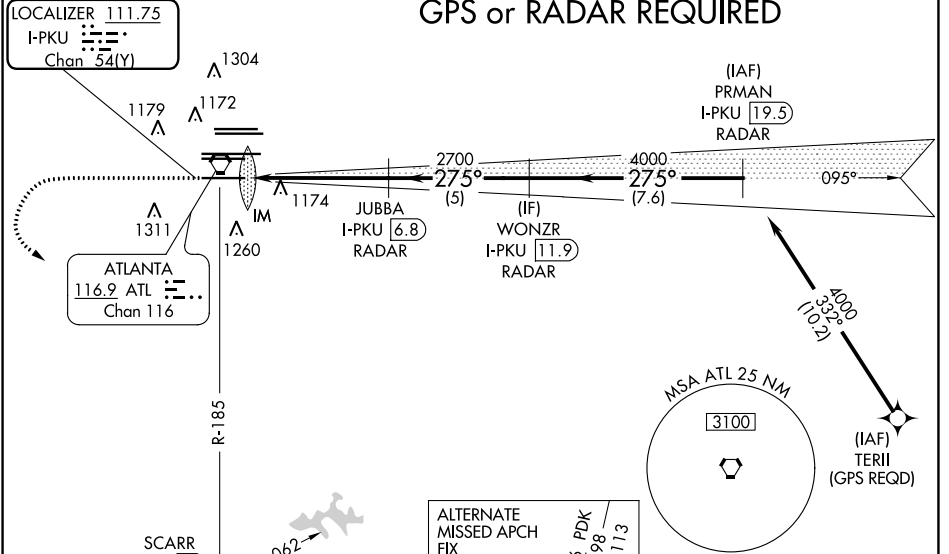
Simultaneous approach authorized with Rwy 26R or 26L or 27R, or Rwy 26R and 27R. DME or Radar Required. Requires specific OPSPEC, MSPEC or LOA approval and use of HUD to DH.

ALSF-2
MISSED APPROACH: Climb to 1400 then climbing left turn to 3000 on ATL VORTAC R-185 to SCARR INT/ ATL 15 DME and hold.

D-ATIS ARR 119.65	ATLANTA APP CON APP CON	ATLANTA TOWER 8L-26R 8R-26L 9L-27R 9R-27L 10-28 RWYS	ALL RWYS (8L-26R,8R-26L) (9L-27R,9R-27L)	GND CON 10-28 RWYS	ALL RWYS 121.65 254.4
DEP 125.55	127.9 379.9	119.1 125.325 123.85 119.3 119.5 254.4	121.9	121.75	121.65 254.4

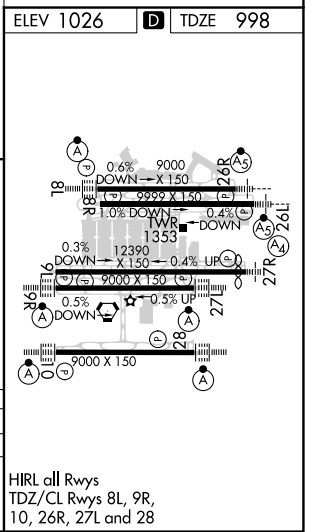
△ 2049
△ 2049
CLNC DEL **118.1** CPDLC

GPS or RADAR REQUIRED



CATEGORY	A	B	C	D
S-ILS 28	RA 264/14		150 DA 1148	

SA CATEGORY I ILS - SPECIAL AIRCREW & AIRCRAFT CERTIFICATION REQUIRED



SE-4, 25 FEB 2021 to 25 MAR 2021

SE-4, 25 FEB 2021 to 25 MAR 2021