

LOC/DME I-FUN 108.9 Chan 26	APP CRS 095°	Rwy Idg 9R 9L TDZE 1026 1019 Apt Elev 1026 1026
---	------------------------	---

ILS RWY 9R (SA CAT I)
HARTSFIELD-JACKSON ATLANTA INTL (ATL)

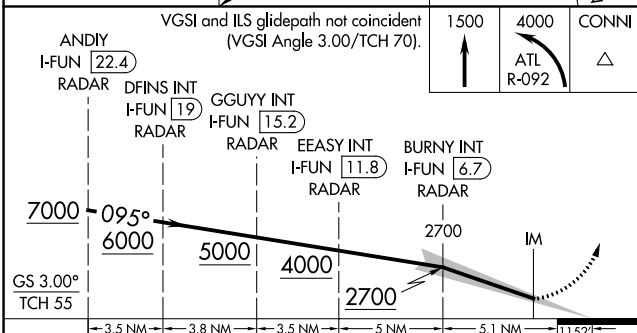
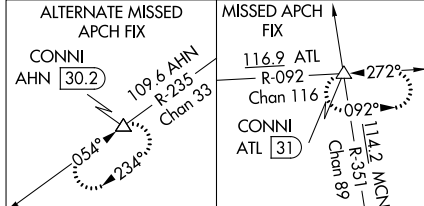
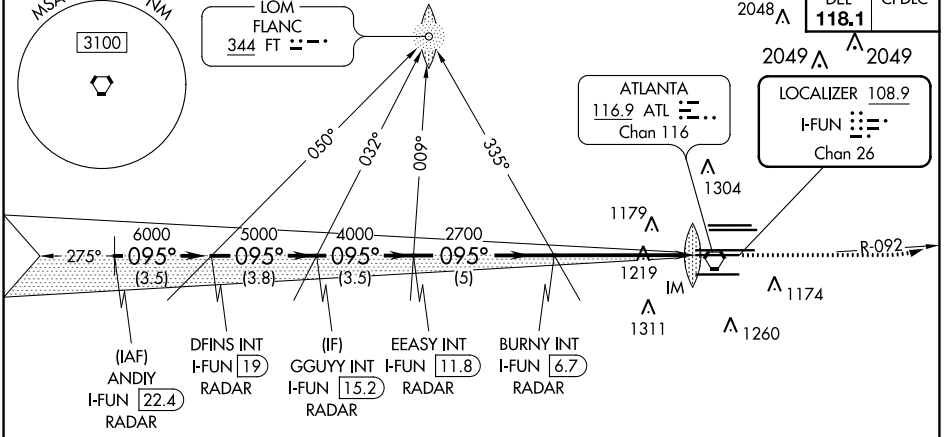
▽ Inop table does not apply to Sidestep 9L for Cats A and B. ADF or DME or RADAR required. Simultaneous approach authorized with Rwy 8L or 8R. Requires specific OPSPEC, MSPEC, or LOA approval and use of HUD to DH.



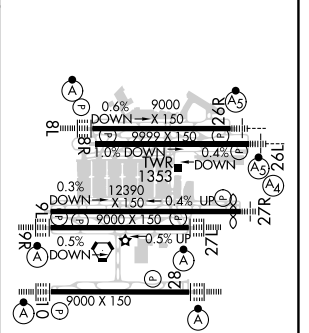
MISSED APPROACH: Climb to 1500 then climbing left turn to 4000 on ATL VORTAC R-092 to CONNI INT/ATL 31 DME and hold.

D-ATIS ARR 119.65	ATLANTA APP CON 127.9 379.9	ATLANTA TOWER 8L-26R 8R-26L 9L-27R 9R-27L 10-28 RWYS 119.1 125.325 123.85 119.3 119.5 254.4	ALL RWYS 121.9	GND CON (8L-26R,8R-26L) (9L-27R,9R-27L) 10-28 RWYS 121.75 121.65 254.4	ALL RWYS
-----------------------------	--	--	-----------------------------	---	-------------

RADAR REQUIRED



ELEV 1026	D TDZE 9R 1026	TDZE 9L 1019
------------------	------------------------------	---------------------



CATEGORY	A	B	C	D
S-ILS 9R	RA 196/14 150 DA 1176			

SA CATEGORY I ILS - SPECIAL AIRCREW & AIRCRAFT CERTIFICATION REQUIRED

HIRL all Rwys
TDZ/CL Rwys 8L,
9R, 10, 26R, 27L and 28

SE-4, 25 FEB 2021 to 25 MAR 2021

SE-4, 25 FEB 2021 to 25 MAR 2021