

LOC/DME I-GXZ 110.1 Chan 38	APP CRS 275°	Rwy Idg TDZE Apt Elev	26R 8500	26L 9999
			990	996
			1026	1026

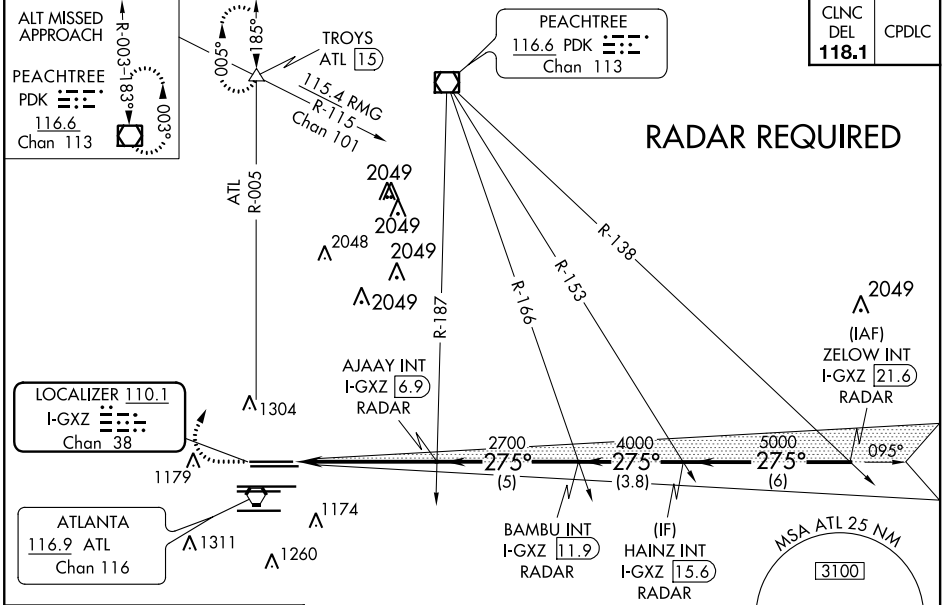
ILS or LOC RWY 26R

HARTSFIELD-JACKSON ATLANTA INTL (ATL)

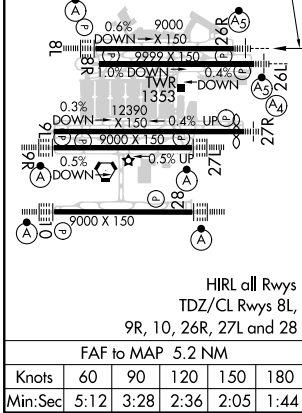
▼ Inop table does not apply to sidestep Rwy 26L. Simultaneous approach authorized with Rwys 27R or 27L or 28, or Rwys 27R and 28.

Rwy 26R MALSR	Rwy 26L MALSR	MISSED APPROACH: Climb to 1400 then climbing right turn to 3500 on ATL VORTAC R-005 to TROYS INT/ ATL 15 DME and hold.
------------------	------------------	--

D-ATIS ARR 119.65 DEP 125.55	ATLANTA APP CON 127.9 379.9	ATLANTA TOWER 8L-26R 8R-26L 9L-27R 9R-27L 10-28 RWYS				ALL 119.3 119.5 254.4	GND CON 10-28 RWYS	ALL 254.4
		119.1 125.325 123.85	121.9	121.75	121.65	121.65	254.4	



ELEV 1026	D TDZE 26R 990 TDZE 26L 996
275° 5.2 NM from FAF	



1400 3500 TROYS
ATL R-005

VGSI and ILS glidepath not coincident (VGSI Angle 3.00/TCH 69).

*LOC only.

BAMBU INT I-GXZ 11.9 RADAR
AJAAY INT I-GXZ 6.9 RADAR
HAINZ INT I-GXZ 15.6 RADAR
ZELOW INT I-GXZ 21.6 RADAR

I-GXZ 1.7, I-GXZ 2.8, 2700, 4000, 5000, GS 3.00° TCH 55

CATEGORY	A	B	C	D
S-ILS 26R	1190/18 200 (200-½)			
S-LOC 26R	1420/24	430 (400-½)	1420/40	430 (400-¾)
SIDESTEP 26L	1420/1¼	424 (400-1¼)	1420-1¾	424 (400-1¾)

SE-4, 25 FEB 2021 to 25 MAR 2021

SE-4, 25 FEB 2021 to 25 MAR 2021