

LOC/DME I-PKU <b>111.75</b>	APP CRS <b>275°</b>	Rwy Idg <b>9000</b>
Chan <b>54 (Y)</b>		TDZE <b>998</b>
		Apt Elev <b>1026</b>

**ILS or LOC RWY 28**  
HARTSFIELD-JACKSON ATLANTA INTL (ATL)

Simultaneous approach authorized with Rwy 26R or 26L or 27R, or Rwys 26R and 27R. DME or Radar Required.

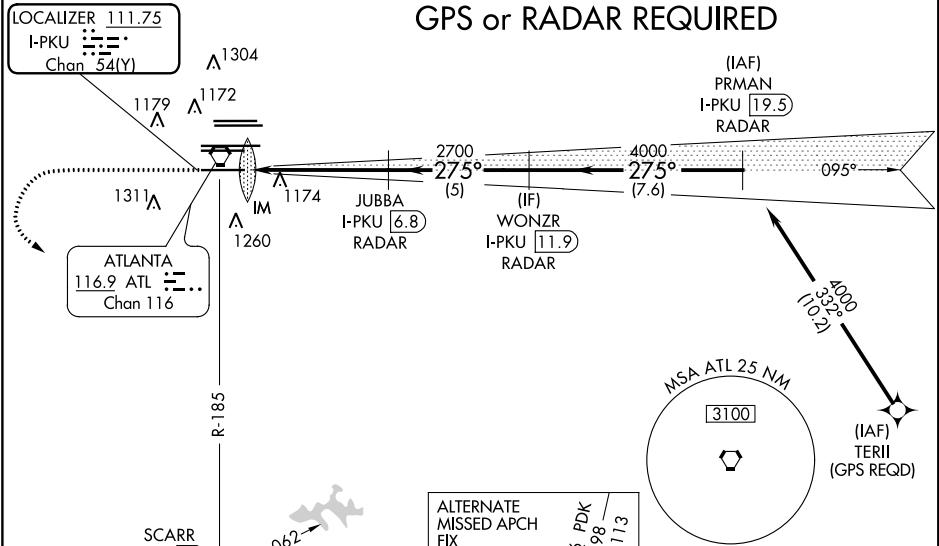


MISSED APPROACH: Climb to 1400 then climbing left turn to 3000 on ATL VORTAC R-185 to SCARR INT/ ATL 15 DME and hold.

D-ATIS ARR <b>119.65</b>	ATLANTA APP CON	ATLANTA TOWER				ALL RWYS	GND CON	ALL RWYS
DEP <b>125.55</b>	<b>127.9 379.9</b>	8L-26R	8R-26L	9L-27R	9R-27L	10-28	(8L-26R,8R-26L) (9L-27R,9R-27L)	10-28
		<b>119.1</b>	<b>125.325</b>	<b>123.85</b>	<b>119.3</b>	<b>119.5</b>	<b>121.9</b>	<b>121.75</b>
						<b>254.4</b>		<b>121.65</b>
								<b>254.4</b>

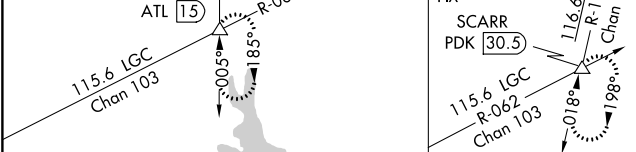
CLNC DEL	CPDLC
<b>118.1</b>	

**GPS or RADAR REQUIRED**

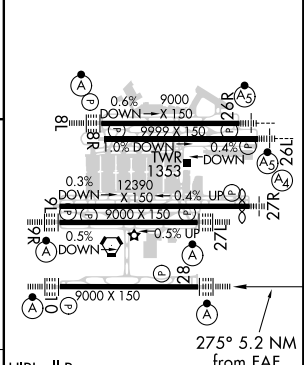
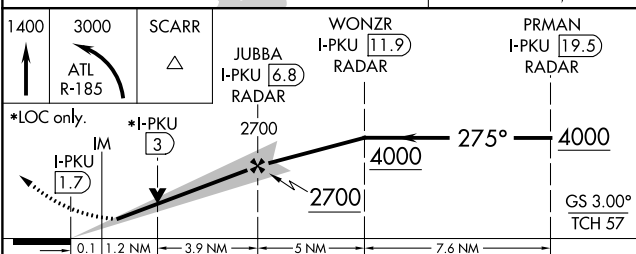


SE-4, 25 FEB 2021 to 25 MAR 2021

SE-4, 25 FEB 2021 to 25 MAR 2021



ELEV 1026	TDZE 998
-----------	----------



CATEGORY	A	B	C	D
S-ILS 28	1198/18		200 (200-1/2)	
S-LOC 28	1480/24	482 (500-1/2)	1480/50	482 (500-1)

HIRL all Rwys				
TDZ/CL Rwys 8L, 9R, 10, 26R, 27L and 28				
FAF to MAP 5.2 NM				
Knots	60	90	120	150
Min:Sec	5:12	3:28	2:36	2:05
			1:44	