

LOC/DME I-HZK 110.5 Chan 42	APP CRS 095°	Rwy Idg TDZE Apt Elev	9L 11730 9000 1019 1026 1026 1026	9R 11730 9000 1019 1026 1026 1026
---	------------------------	-----------------------------	---	---

ILS or LOC RWY 9L

HARTSFIELD-JACKSON ATLANTA INTL (ATL)

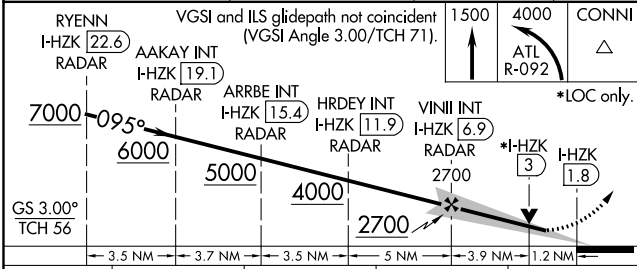
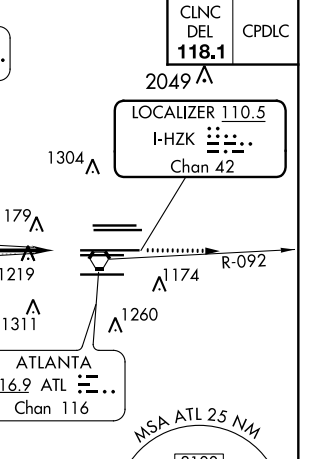
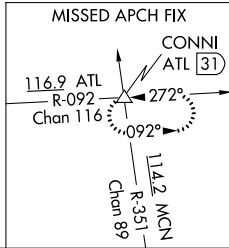
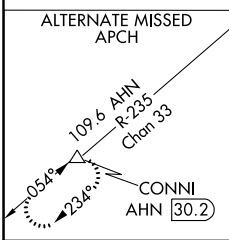
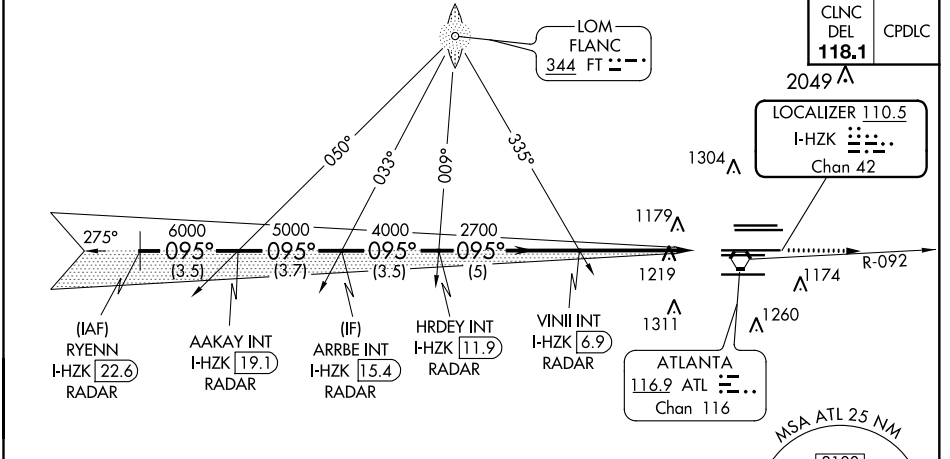
RADAR required for procedure entry.
ADF or DME or RADAR required.

▼ Inop table does not apply to sidestep 9R Cats A and B. Simultaneous approach authorized with Rwy 8L or 8R or 10, or Rwys 8L and 10. Rwy 9L helicopter visibility reduction below RVR 4000 NA.

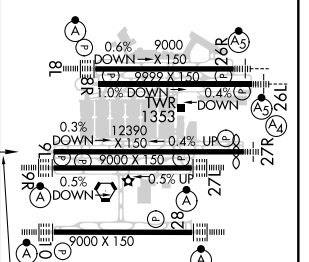
Rwy 9R ALSF-2

MISSED APPROACH: Climb to 1500 then climbing left turn to 4000 on ATL VORTAC R-092 to CONNI INT/ATL 31 DME and hold.

D-ATIS ARR 119.65	ATLANTA APP CON 127.9 379.9	ATLANTA TOWER 8L-26R 8R-26L 9L-27R 9R-27L 10-28 RWYS				ALL RWYS (8L-26R,8R-26L) (9L-27R,9R-27L) 10-28 RWYS	GND CON 121.9	ALL RWYS 121.75 121.65 254.4
DEP 125.55	127.9 379.9	119.1 125.325 123.85 119.3 119.5 254.4						



ELEV 1026	TDZE 9L 1019	TDZE 9R 1026
-----------	--------------	--------------



CATEGORY	A	B	C	D
S-ILS 9L	1359/50		340 (400-1)	
S-LOC 9L	1480/55	461 (500-1)	1480-1 3/8	461 (500-1 3/8)
SIDESTEP 9R	1480/55	454 (500-1)	1480-1 3/4 454 (500-1 3/4)	1480-2 454 (500-2)

095° 5.1 NM from FAF					
HIRL all Rwys TDZ/CL Rwys 8L, 9R, 10, 26R, 27L and 28					
FAF to MAP 5.1 NM					
Knots	60	90	120	150	180
Min:Sec	5:06	3:24	2:33	2:02	1:42

SE-4, 25 FEB 2021 to 25 MAR 2021

SE-4, 25 FEB 2021 to 25 MAR 2021