

# ILS PRM RWY 28 (CAT II) (SIMULTANEOUS CLOSE PARALLEL) HARTSFIELD-JACKSON ATLANTA INTL (ATL)

LOC/DME I-PKU <b>111.75</b> Chan <b>54 (Y)</b>	APP CRS <b>275°</b>	Rwy Ldg TDZE Apt Elev	<b>9000</b> <b>998</b> <b>1026</b>
--	------------------------	-----------------------------	--

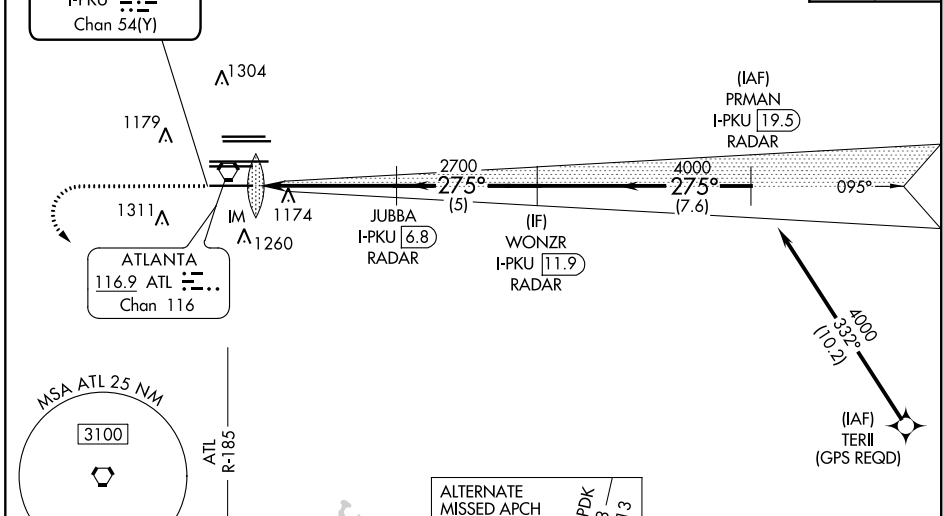
Simultaneous close parallel approach authorized with ILS PRM and RNAV PRM Rwy 26R or 26L or 27R or 27L or Rwy 26R and 27R, or Rwy 26R and 27L, or Rwy 26L and 27R, or Rwy 26L and 27L. Procedure not authorized when glideslope not available. Dual VHF comm required. See additional requirements on AAUP.

ALSF-2  
A

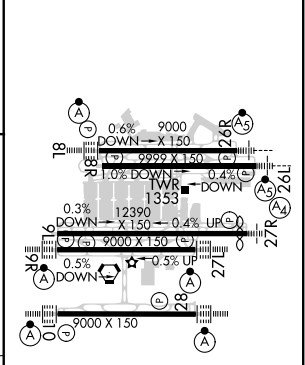
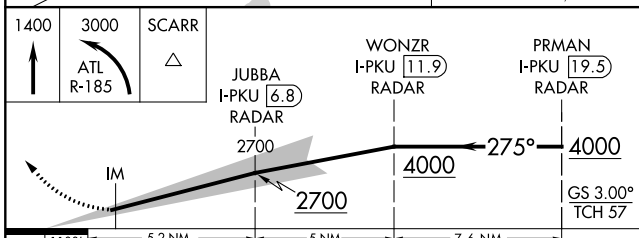
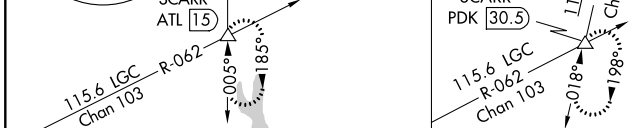
MISSED APPROACH: Climb to 1400 then climbing left turn to 3000 on ATL VORTAC R-185 to SCARR INT/ATL 15 DME and hold.

D-ATIS ARR <b>119.65</b> DEP <b>125.55</b>	ATLANTA APP CON <b>127.9 379.9</b>	ATLANTA TOWER 8L-26R 8R-26L 9L-27R 9R-27L 10-28 RWYS <b>119.1 125.325 123.85 119.3 119.5 254.4</b> PRM <b>133.425</b>	ALL RWYS <b>121.9 121.75 121.65 254.4</b>
--	---------------------------------------	--	--

LOCALIZER <b>111.75</b> I-PKU Chan <b>54(Y)</b>	<b>A<sub>2049</sub></b> GPS or RADAR REQUIRED	CLNC DEL <b>118.1</b>	CPDLC
---	---	--------------------------	-------



ELEV <b>1026</b>	TDZE <b>998</b>
------------------	-----------------



CATEGORY	A	B	C	D
S-ILS 28	RA 188/12		100 DA 1098	

**CATEGORY II ILS - SPECIAL AIRCREW & AIRCRAFT CERTIFICATION REQUIRED**

HIRL all Rwy 28, 26L, 26R, 27L and 27R  
TDZ/CL Rwy 8L, 9R, 10, 26R, 27L and 28

SE-4, 25 FEB 2021 to 25 MAR 2021

SE-4, 25 FEB 2021 to 25 MAR 2021