

ILS PRM RWY 9L

(SIMULTANEOUS CLOSE PARALLEL)

HARTSFIELD-JACKSON ATLANTA INTL (ATL)

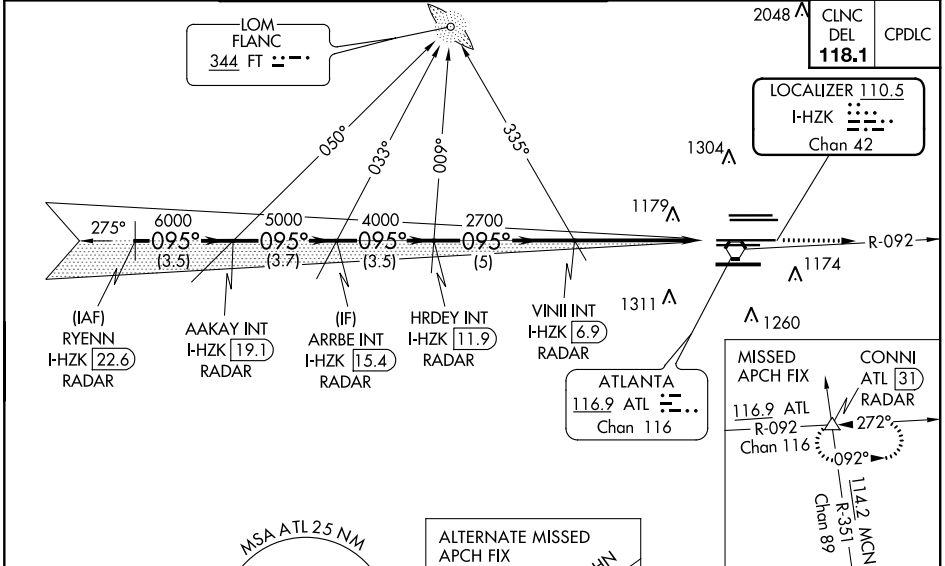
LOC/DME I-HZK 110.5 Chan 42	APP CRS 095°	Rwy ldg 11730 TDZE 1019 Apt Elev 1026
---	------------------------	--

ADF or DME or RADAR required.
RADAR required for procedure entry.

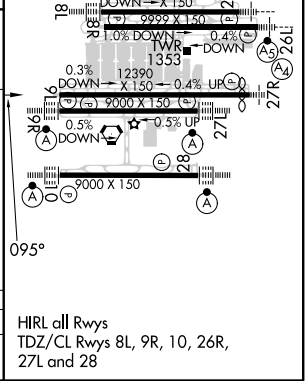
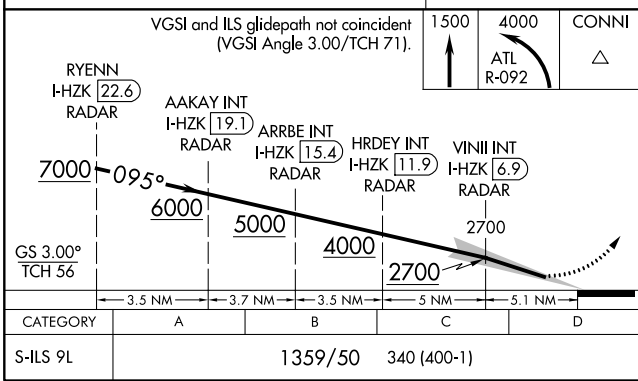
Simultaneous close parallel approach authorized with ILS PRM and RNAV PRM Rwy 8L or 8R or 10, or Rwy 8L and 10, or Rwy 8R and 10. Procedure NA when glideslope not available. Dual VHF Comm required. See additional requirements on AAUP. Rwy 9L helicopter visibility reduction below RVR 4000 NA.

MISSED APPROACH: Climb to 1500 then climbing left turn to 4000 on ATL VORTAC R-092 to CONNII INT/ATL 31 DME/RADAR and hold.

D-ATIS ARR 119.65 DEP 125.55	ATLANTA APP CON 127.9 379.9	ATLANTA TOWER 8L-26R 8R-26L 9L-27R 9R-27L 10-28 RWYS 119.1 125.325 123.85 119.3 119.5 254.4 PRM 132.55	ALL RWYS (8L-26R,8R-26L) (9L-27R,9R-27L) 10-28 RWYS 121.9 121.75 121.65 254.4	GND CON 121.9 121.75 121.65 254.4	ALL RWYS
--	--	---	---	---	-------------



ELEV 1026	TDZE 1019
-----------	-----------



SE-4, 25 FEB 2021 to 25 MAR 2021

SE-4, 25 FEB 2021 to 25 MAR 2021