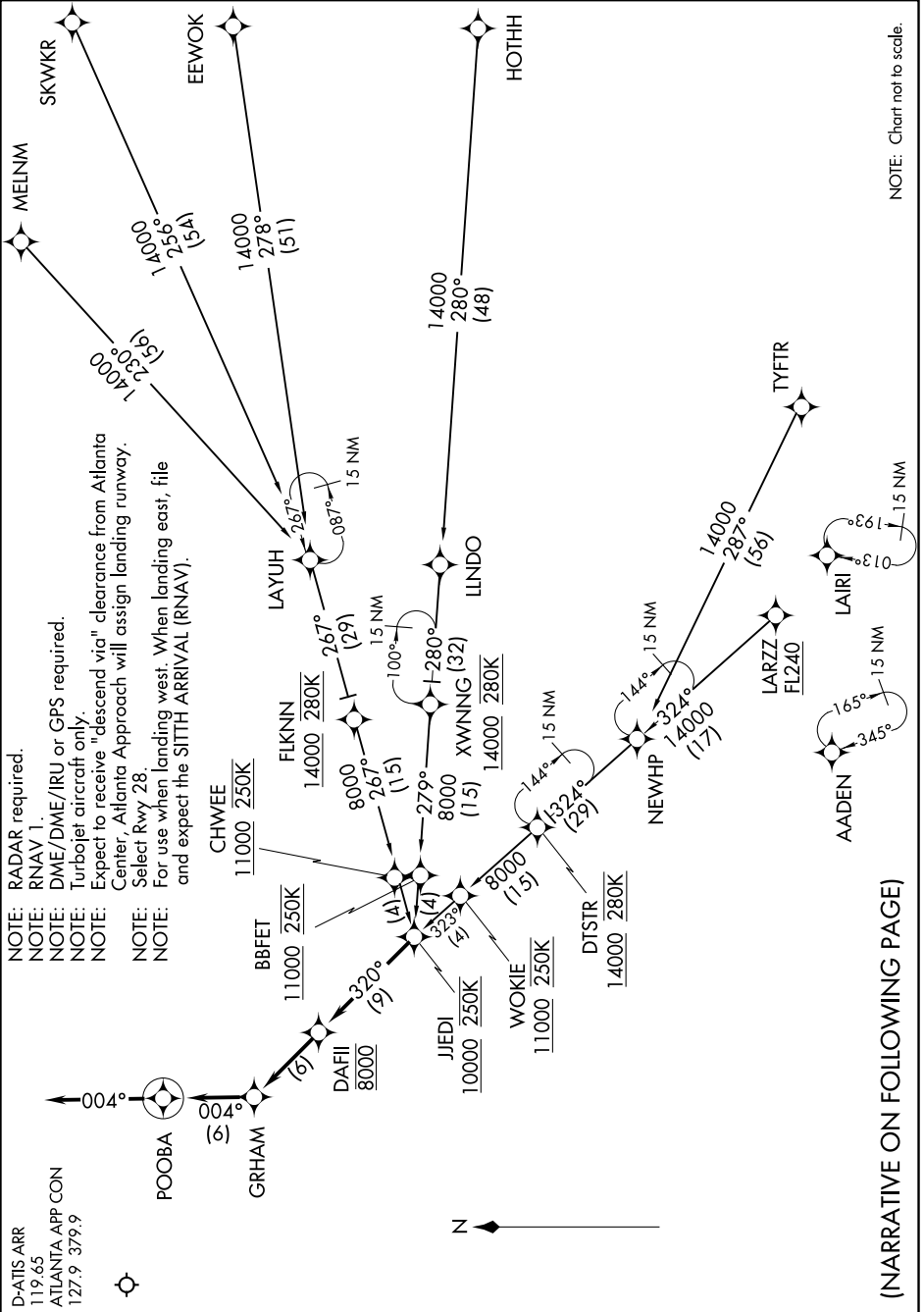


JJEDI TWO ARRIVAL (RNAV)

Transition Routes

ATLANTA, GEORGIA

SE-4, 25 FEB 2021 to 25 MAR 2021



- NOTE: RADAR required.
- NOTE: RNAV 1.
- NOTE: DME/DME/IRU or GPS required.
- NOTE: Turboprop aircraft only.
- NOTE: Expect to receive "descend via" clearance from Atlanta Center, Atlanta Approach will assign landing runway.
- NOTE: Select Rwy 28.
- NOTE: For use when landing west. When landing east, file and expect the SITH ARRIVAL (RNAV).

NOTE: Chart not to scale.

SE-4, 25 FEB 2021 to 25 MAR 2021

(NARRATIVE ON FOLLOWING PAGE)