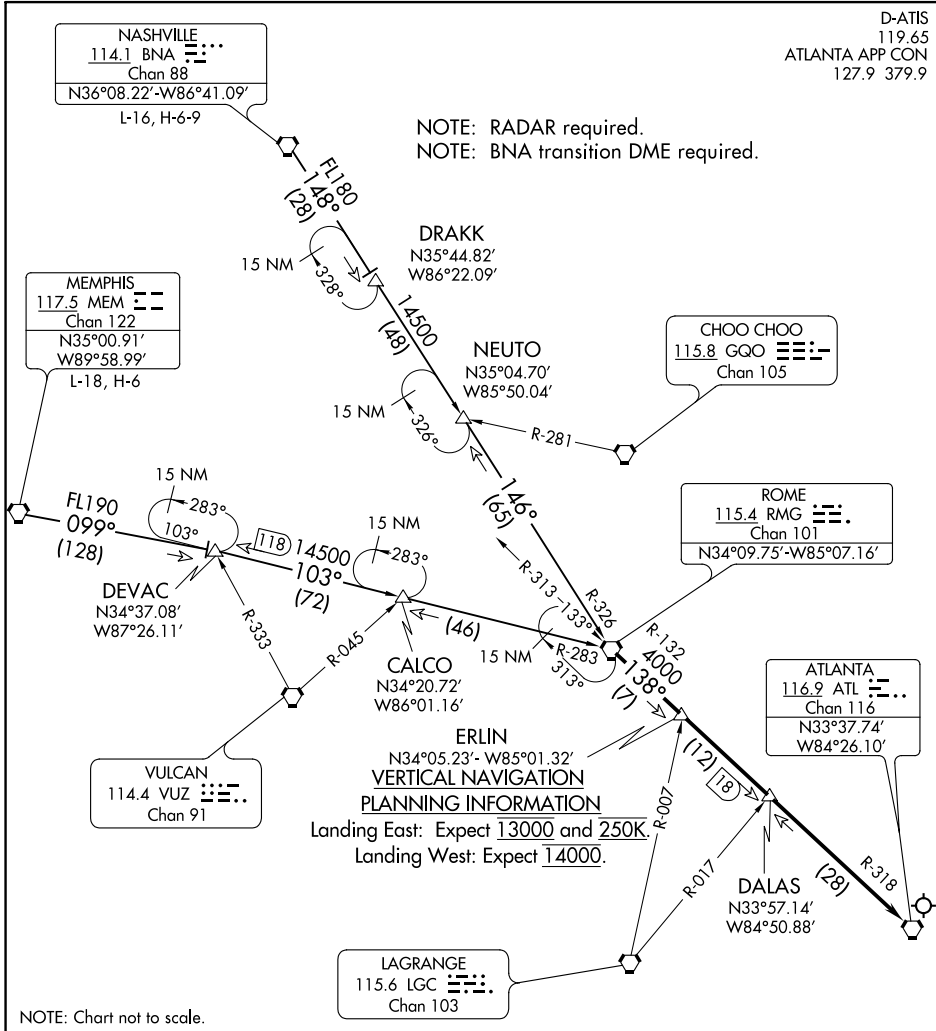


AL-26 (FAA)

D-ATIS  
 119.65  
 ATLANTA APP CON  
 127.9 379.9

NOTE: RADAR required.  
 NOTE: BNA transition DME required.



SE-4, 25 FEB 2021 to 25 MAR 2021

SE-4, 25 FEB 2021 to 25 MAR 2021

NOTE: Chart not to scale.

**ARRIVAL ROUTE DESCRIPTION**

**MEMPHIS TRANSITION (MEM.RMG6):** From over MEM VORTAC on MEM R-099 to DEVAC, then on RMG R-283 to RMG VORTAC. Thence. . .

**NASHVILLE TRANSITION (BNA.RMG6):** From over BNA VORTAC on BNA R-148 to DRACK, then on RMG R-326 to RMG VORTAC. Thence. . .

. . . From over RMG VORTAC on ATL R-318 to ATL VORTAC. Expect RADAR vectors to final approach course after DALAS.