

# RNAV (GPS) PRM RWY 8R (SIMULTANEOUS CLOSE PARALLEL) HARTSFIELD-JACKSON ATLANTA INTL (ATL)

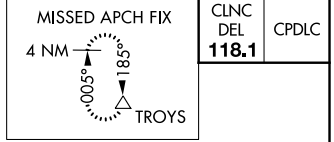
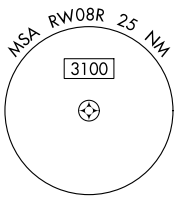
WAAS CH <b>48800</b> <b>W08D</b>	APP CRS <b>095°</b>	Rwy Idg TDZE <b>1024</b> Apt Elev <b>1026</b>	<b>9999</b>
--	------------------------	---	-------------

RNP APCH.

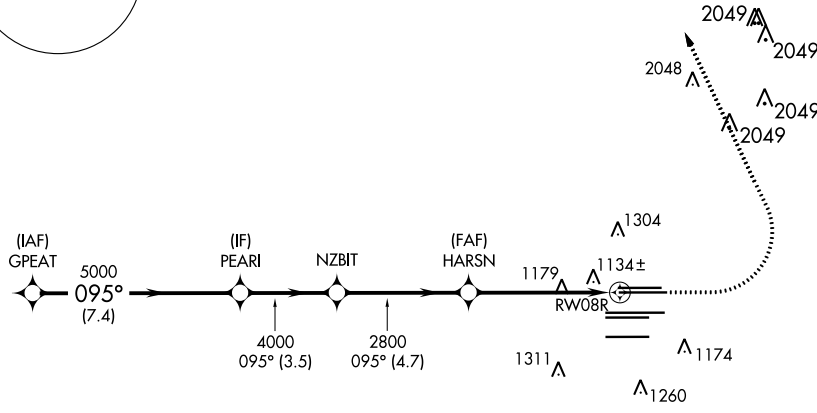
▼ For uncompensated Baro-VNAV systems, LNAV/VNAV NA below -7°C, or above 54°C.  
 ▲ NA Simultaneous close parallel approach authorized with ILS PRM and RNAV PRM Rwy 9L or 9R or 10, or Rwys 9L and 10, or Rwys 9R and 10. See additional requirements on AAUP.  
 Dual VHF comm required. Use of FD or AP providing RNAV track guidance required during simultaneous operations.

MISSED APPROACH: Climb to 1500 then climbing left turn to 3500 direct TROYS and hold.

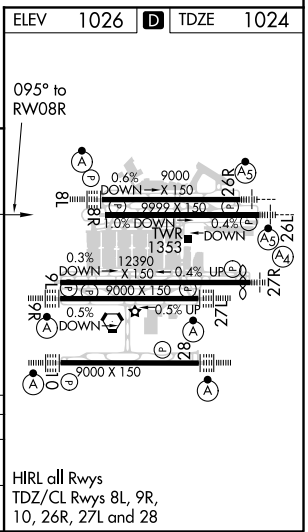
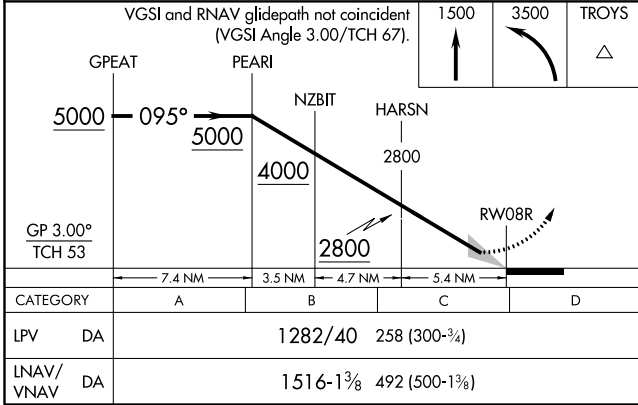
D-ATIS ARR <b>119.65</b> DEP <b>125.55</b>	ATLANTA APP CON <b>127.9 379.9</b>	ATLANTA TOWER 8L-26R 8R-26L 9L-27R 9R-27L 10-28 RWYS <b>119.1 125.325 123.85 119.3 119.5 254.4</b> PRM <b>126.9</b>	ALL RWYS (8L-26R, 8R-26L) (9L-27R, 9R-27L) 10-28 <b>121.9 121.75 121.65 254.4</b>
--	--	--	--



CLNC DEL <b>118.1</b>	CPDLC
-----------------------------	-------



## RADAR REQUIRED



SE-4, 25 FEB 2021 to 25 MAR 2021

SE-4, 25 FEB 2021 to 25 MAR 2021

# RNAV (GPS) PRM RWY 8R (SIMULTANEOUS CLOSE PARALLEL)