


WAAS CH <b>61000</b> <b>W26B</b>	APP CRS <b>275°</b>	Rwy Idg TDZE <b>990</b> Apt Elev <b>1026</b>	<b>8500</b>
--	------------------------	--	-------------

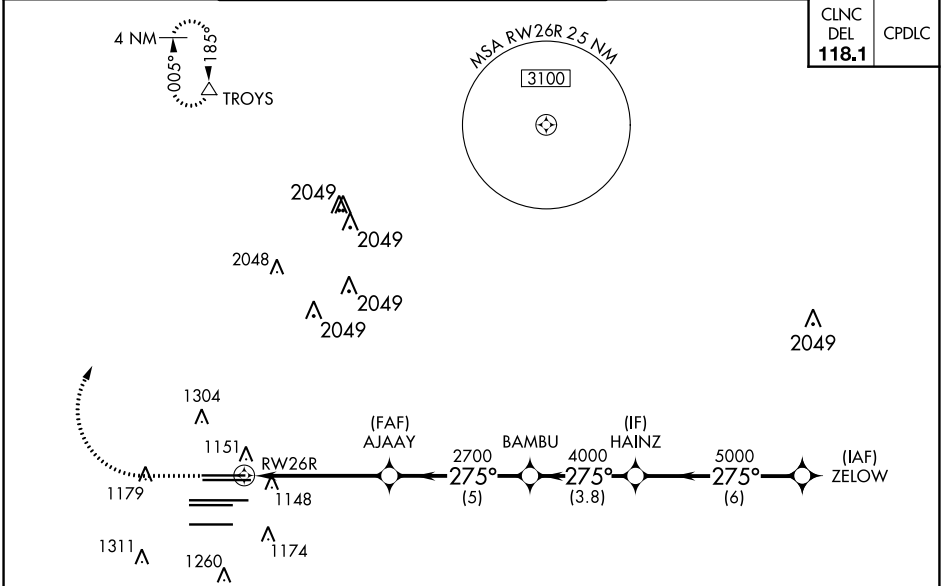
# RNAV (GPS) Y RWY 26R

HARTSFIELD-JACKSON ATLANTA INTL (ATL)

**▽** For uncompensated Baro-VNAV systems, LNAV/VNAV NA below -7°C (20°F) or above 54°C (130°F). DME/DME RNP-0.3 NA. Simultaneous approach authorized with Rwy 27R or 27L or 28, or Rwys 27R and 28. LNAV procedure NA during simultaneous operations. Use of FD or AP providing RNAV track guidance required during simultaneous operations.

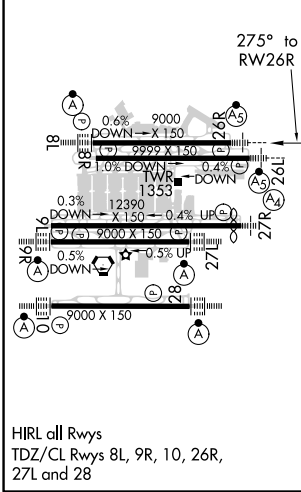
**MALSRL**  
  
**MISSED APPROACH:**  
 Climb to 1500 then climbing right turn to 3500 direct TROYS and hold.

D-ATIS ARR <b>119.65</b>	ATLANTA APP CON <b>127.9 379.9</b>	ATLANTA TOWER 8L-26R 8R-26L 9L-27R 9R-27L 10-28 RWYS				ALL RWYS	GND CON (8L-26R,8R-26L) (9L-27R,9R-27L) 10-28	ALL RWYS			
DEP <b>125.55</b>	<b>127.9 379.9</b>	<b>119.1</b>	<b>125.325</b>	<b>123.85</b>	<b>119.3</b>	<b>119.5</b>	<b>254.4</b>	<b>121.9</b>	<b>121.75</b>	<b>121.65</b>	<b>254.4</b>



ELEV 1026	<b>D</b>	TDZE 990
-----------	----------	----------

## RADAR REQUIRED



CATEGORY	A	B	C	D
LPV DA		1190/18	200 (200-½)	
LNAV/VNAV DA		1426/50	436 (500-1)	
LNAV MDA	1460/24	470 (500-½)	1460/50	470 (500-1)

SE-4, 25 FEB 2021 to 25 MAR 2021

SE-4, 25 FEB 2021 to 25 MAR 2021