

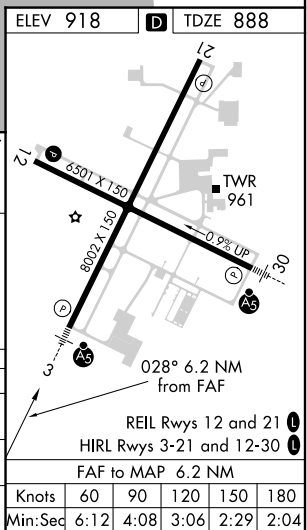
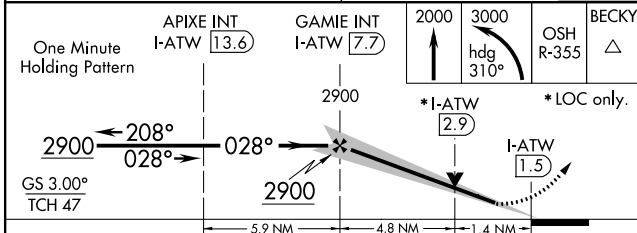
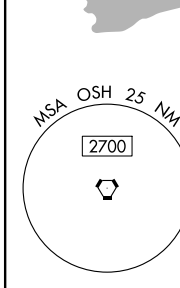
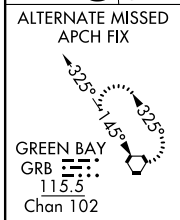
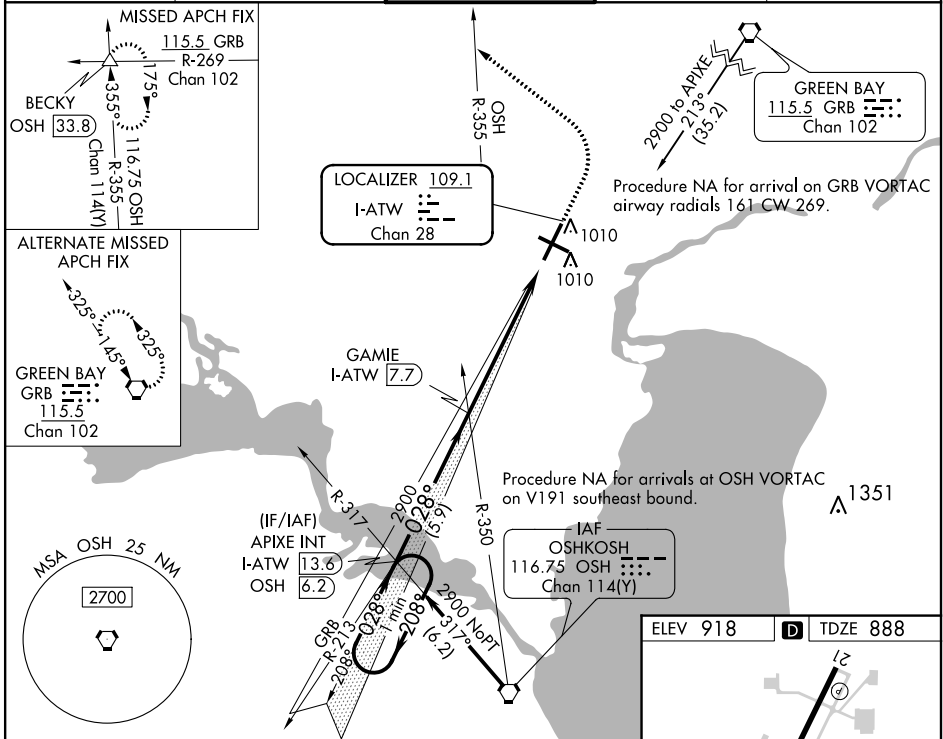
LOC/DME I-ATW <b>109.1</b> Chan 28	APP CRS <b>028°</b>	Rwy Idg <b>8002</b>	<b>888</b>
		TDZE <b>888</b>	
		Apt Elev <b>918</b>	

# ILS or LOC RWY 3

APPLETON INTL (ATW)

<p>For inop ALS, increase S-LOC 3 Cats C/D visibility to 1 3/8 SM.</p>	<p>MALS R</p>	<p>MISSED APPROACH: Climb to 2000 then climbing left turn to 3000 on heading 310° and OSH VORTAC R-355 to BECKY INT/ OSH VORTAC 33.8 DME and hold.</p>

ATIS <b>127.15</b>	GREEN BAY APP CON* <b>126.3 338.2</b>	APPLETON TOWER* <b>119.6</b> (CTAF)	GND CON <b>121.7</b>	UNICOM <b>122.95</b>
-----------------------	--	--	-------------------------	-------------------------



CATEGORY	A	B	C	D
S-ILS 3	1088/24		200 (200-1/2)	
S-LOC 3	1380/24	492 (500-1/2)	1380/50	492 (500-1)
CIRCLING	1380-1	462 (500-1)	1400-1 1/2 482 (500-1 1/2)	1480-2 562 (600-2)

EC-3, 25 FEB 2021 to 25 MAR 2021

EC-3, 25 FEB 2021 to 25 MAR 2021

ELEV 918		TDZE 888			
Knots	60	90	120	150	180
Min:Sec	6:12	4:08	3:06	2:29	2:04